



Welcome to Christmas Carol Bingo and Quiz Game

Preparing the Game:

Print the bingo cards, the clue cards, and the markers (if you choose to use them). If you prefer, you can use beans, buttons, etc. as markers. You may also choose to laminate the cards and marker pages for repeated use.

Cut apart the markers if you are using them.

Cut apart the clue cards and shuffle them well to mix up the clues. There are three clues for each carol. You will notice a few blank clue cards at the end. You can use some of your own clues if there are questions you would like to include for a particular carol.

The bingo cards consist of two pictures each of twelve different carols and a free space. This allows for the players to not only win by knowing the answers, but also from choosing which one of the pictures of the correct carol to put their marker on. A certain amount of strategy and chance is involved since the player does not know if they will get another clue card for that carol or not.

To Play:

Each player gets a bingo card and several markers to cover the spaces on their card.

The person chosen to be the "caller" shuffles all of the clue cards, being careful to mix them as much as possible. They then put the cards in a stack in front of them.

All players put a marker on the free space on their card.

The caller draws the top card and reads the information to the players, being careful not to read the name of the carol.

The players decide what carol they think the clues are about and put a marker on one of the spaces with that carol's picture on it. Remember, there are two pictures for each carol on each card, so the player has to decide which one they want to put the marker on.

The caller then tells the players the name of the correct carol. Players who covered the correct carol may leave their marker on their card. Players who did not cover the correct carol must remove their marker from their card. In the event the third clue is drawn for a carol, players who previously got a clue wrong for that carol may use the opportunity to guess correctly and cover a space on the card. All other players forfeit their turn (without revealing the answer to other players). Play continues until someone has bingo.

What Christmas carol has the line,
"All is calm, all is bright"?



Silent Night

What Christmas carol has the line,
"Holy infant, so tender and mild"?



Silent Night

What Christmas carol has the line,
"Son of God, love's pure light"?



Silent Night

What Christmas carol has the line,
"no crib for a bed"?



Away In a Manger

What Christmas carol has the line,
"The little Lord Jesus asleep on
the hay"?



Away In a Manger

What Christmas carol has
the line, "Bless all the dear
children in Thy tender care"?



Away In a Manger

What Christmas carol has the
line, "Following yonder star"?



We Three Kings

What Christmas carol has
the line, "Born a king
on Bethlehem's plain"?



We Three Kings

What Christmas carol has
the line, "Star with
royal beauty bright"?



We Three Kings

What Christmas carol has the line,
"Born is the King of Israel"?



The First Noel



Christmas Carol Bingo



Away In a Manger



Go, Tell It On the Mountain



Hark! The Herald Angels Sing



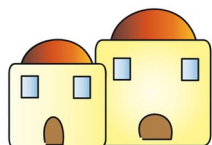
It Came Upon a Midnight Clear



Joy to the World



O Come All Ye Faithful



O Little Town of Bethlehem



Silent Night



The First Noel



We Three Kings



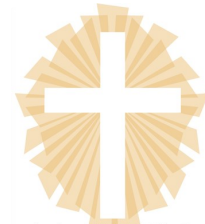
What Child Is This?



Angels We Have Heard On High



Angels We Have Heard On High



What Child Is This?



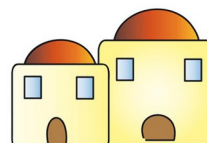
We Three Kings



The First Noel



Silent Night



O Little Town of Bethlehem



O Come All Ye Faithful



Joy to the World



It Came Upon a Midnight Clear



Hark! The Herald Angels Sing



Go, Tell It On the Mountain



Away In a Manger

