

Right Angle

Right Angle

Right Angle

Right Angle

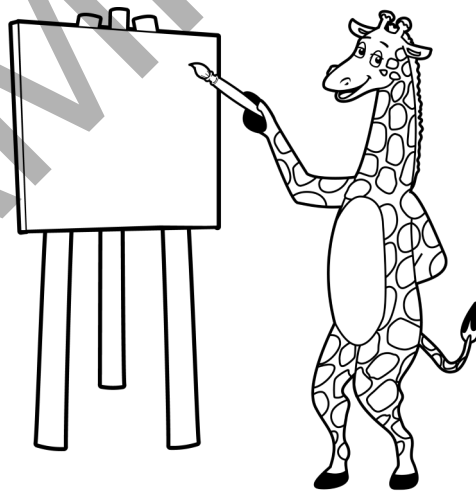
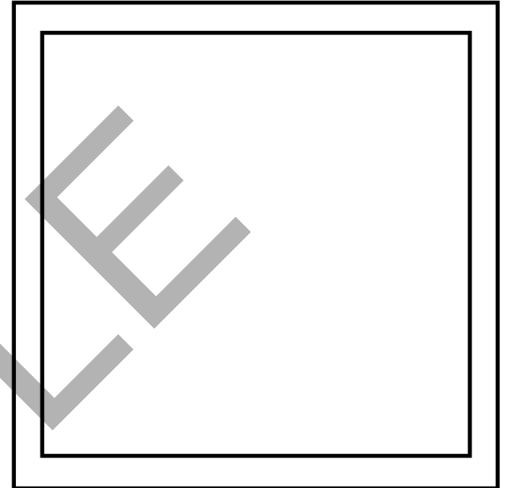
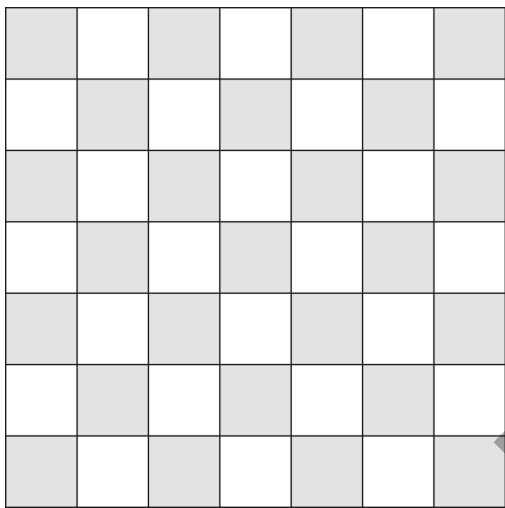
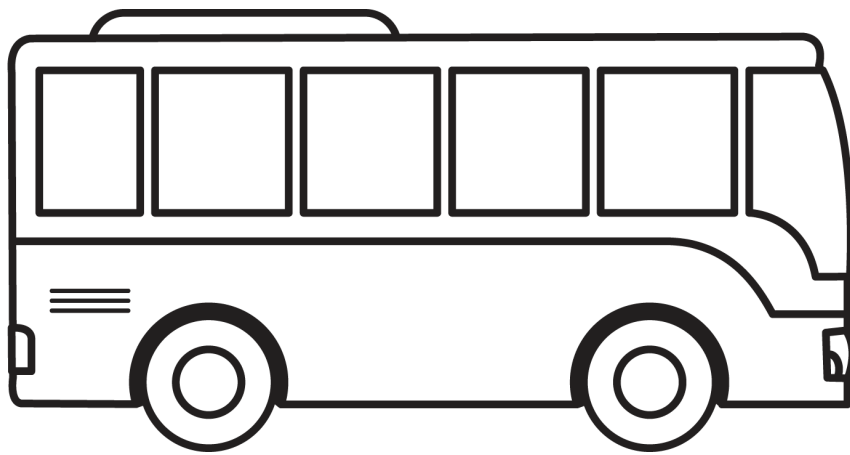


Trace the square.

Square

A square is a figure  
that has four straight  
sides that are all the  
same length.

A square has four  
right angles. A right  
angle is an angle that  
forms a perfect "L."



Some things that can

be shaped like a

square are . . .

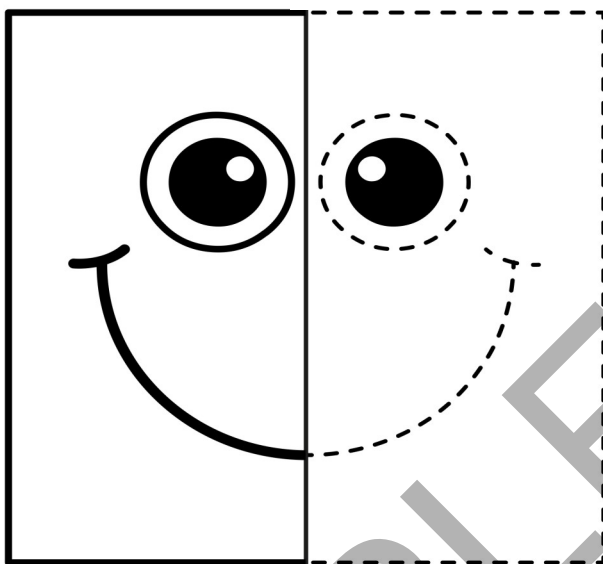
a window on a bus,

a picture frame,

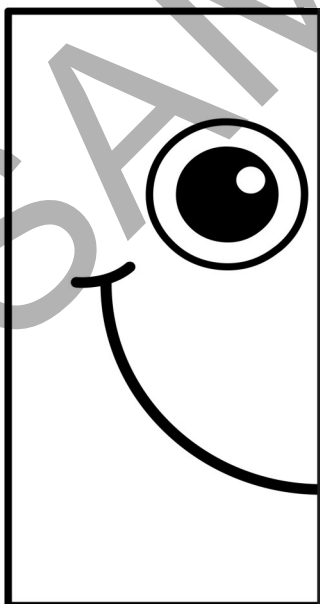
a game board,

and a canvas for  
painting.

When we say an object is symmetrical, we mean that half of the object looks like a mirror image of the other side. Here are some images that are symmetrical.



Trace half the square to show symmetry.



Draw half the square to show symmetry.