


# AMAZING GRACE



A - maz - ing — grace! How sweet the sound that

1. What key is the song in? \_\_\_\_\_
2. What note do you play when playing "grace"? \_\_\_\_\_
3. What type of note do you play when playing "sweet"? \_\_\_\_\_
4. What type of note do you play when playing "that"? \_\_\_\_\_



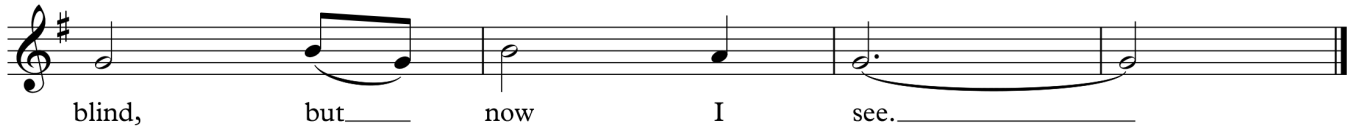
saved a — wretch like me! \_\_\_\_\_ I

5. What types of notes do you play when you play "a"? \_\_\_\_\_
6. What note do you play when playing "like"? \_\_\_\_\_
7. What type of note do you play when playing "me" in the third measure? \_\_\_\_\_
8. What note do you play when playing the first note in the fourth measure? \_\_\_\_\_



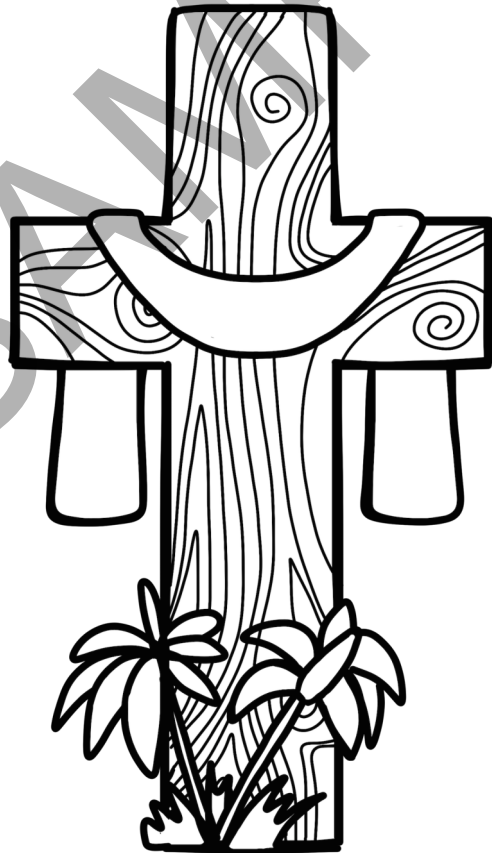
once was lost, but now am — found. Was

9. What note do you play when playing "lost"? \_\_\_\_\_
10. What note do you play when playing "now"? \_\_\_\_\_
11. What types of notes do you play when playing "am"? \_\_\_\_\_
12. What is the only note played in the fourth measure? \_\_\_\_\_



- 13. How many notes do you play in the first measure above? \_\_\_\_\_
- 14. How many total beats do the notes for "see" get? \_\_\_\_\_
- 15. Are there any sharps or flats in this song? \_\_\_\_\_
- 16. How many quarter notes are on this line of music? \_\_\_\_\_

SAMPLE



# BALM IN GILEAD

There is a Balm in Gil-e-ad, To make the wound-ed whole. There is a

1. What key is the song in? \_\_\_\_\_
2. What is the time signature of the song? \_\_\_\_\_
3. With this time signature, how many beats are in a measure? \_\_\_\_\_
4. What is indicated by the double bar lines and dots at the beginning of the second measure? \_\_\_\_\_

Balm in Gil - e - ad, to heal the sin - sick soul. Some -  
If

5. How many sharps are shown on the staff? \_\_\_\_\_
6. How many beats does the first note in the first measure above get? \_\_\_\_\_
7. How many beats do the first two notes in the second measure above each get? \_\_\_\_\_
8. How many beats does a half note get in this song? \_\_\_\_\_

times I feel dis - cour - aged, And think my work's in vain, But  
you can preach like Pe - ter, If you can pray like Paul, Go

9. What types of notes are each note in the first measure? \_\_\_\_\_
10. What note is played when playing "- aged"? \_\_\_\_\_
11. What note is played when playing "my"? \_\_\_\_\_
12. What note is played for three of the four beats of the last measure? \_\_\_\_\_

then the Ho - ly Spir - it, Re - vives my soul a - gain. There is a  
home and tell your neigh - bor, "He died to save us all."

13. What note is played for "Ho -" and "- ly"? \_\_\_\_\_
14. How many beats does the second note in the second measure above get? \_\_\_\_\_
15. How many beats does each note in the third measure above get? \_\_\_\_\_
16. How many total beats do the last four notes in the last measure above get? \_\_\_\_\_

Balm in Gil - e - ad, To make the wound - ed whole... There is a

17. How many "B" notes are in this line of music? \_\_\_\_\_
18. What is the circled part of the note for "the" called? \_\_\_\_\_
19. What is the curved line called that connects the notes for "whole"? \_\_\_\_\_
20. What two notes are played when playing "whole"? \_\_\_\_\_

Balm in Gil - e - ad, to heal the sin - sick soul, To

21. What type of note is played when playing "Balm"? \_\_\_\_\_
22. What note is played for two of the eighth notes in this line of music? \_\_\_\_\_
23. What is the circled part of the note for "- ad" called? \_\_\_\_\_
24. What three notes are played when playing "soul" in the last measure? \_\_\_\_\_



25. What type of note is played when playing "heal"? \_\_\_\_\_

26. What type of note is played when playing "the"? \_\_\_\_\_

27. What type of note is played when playing "soul"? \_\_\_\_\_

28. How many beats does the note for "soul" get? \_\_\_\_\_

SAMPLE

