

# ARKANSAS TRAVELER



Oh, once u-pon a time in Ark - an - sas, An old man sat in his lit-tle ca-bin door, And

1. What key is the song in? \_\_\_\_\_

2. What note do you play when playing "time"? \_\_\_\_\_

3. What types of notes do you play when playing "u - pon"? \_\_\_\_\_

4. What types of notes do you play when playing "old man sat"? \_\_\_\_\_



fid-dled at a tune that he liked to hear, A jol-ly old\_\_ tune that he played by\_\_ ear. It was

5. What note do you play when you play "- dled" in the first measure? \_\_\_\_\_

6. What note do you play when playing "hear"? \_\_\_\_\_

7. What note do you play when playing "that" in the third measure? \_\_\_\_\_

8. What notes do you play when playing "by"? \_\_\_\_\_



rain - ing\_\_ hard, but the fid-dler did-n't care, He sawed a - way at the pop-u - lar\_\_ air, Tho' his

9. What type of note do you play when playing "hard"? \_\_\_\_\_

10. What note do you play when playing "care"? \_\_\_\_\_

11. What type of note do you play when playing "at" and "the"? \_\_\_\_\_

12. What notes do you play when playing "- lar"? \_\_\_\_\_



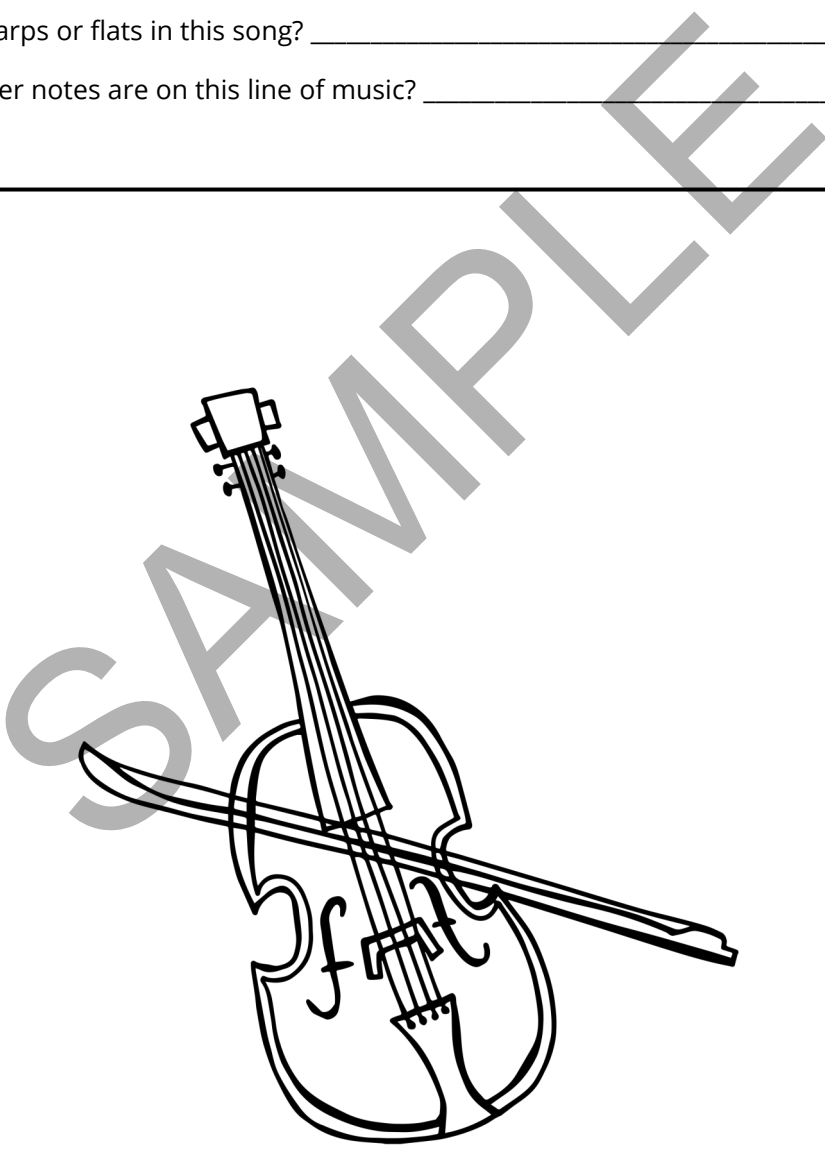
roof - tree\_ leaked like a wa - ter - fall, That did-n't seem to bo-ther the\_ man at\_ all.

13. How many notes do you play in the first measure above? \_\_\_\_\_

14. What note do you play when playing "all"? \_\_\_\_\_

15. Are there any sharps or flats in this song? \_\_\_\_\_

16. How many quarter notes are on this line of music? \_\_\_\_\_



# AULD LANG SYNE

Should auld ac-quain-tance be for-got, And nev - er bro't to mind? Should  
here's a hand, my trust - y frien', And gie's a hand o' thine; We'll

1. What key is the song in? \_\_\_\_\_
2. What is the time signature of the song? \_\_\_\_\_
3. With this time signature, how many beats are in a measure? \_\_\_\_\_
4. How many flats are shown on the staff? \_\_\_\_\_

auld ac-quain-tance be for-got, And days of auld lang syne? For  
tak' a cup o' kind - ness yet, For auld lang syne.

5. How many times is there a "G" note in this line of music? \_\_\_\_\_
6. How many beats does the first note in the first measure above get? \_\_\_\_\_
7. How many beats does the first note in the fourth measure above get? \_\_\_\_\_
8. How many beats does a half note get in this song? \_\_\_\_\_

auld lang syne, my dear, For auld lang syne; We'll

9. Which measure in this line of music is the only one that does not have any eighth notes? \_\_\_\_\_
10. What note is played for two of the eighth notes in this line of music? \_\_\_\_\_
11. What notes are played when playing "lang" the first time? \_\_\_\_\_
12. What note is played for all four beats of the last measure? \_\_\_\_\_

drink a cup o' kind - ness yet For \_\_\_ auld \_\_\_ lang \_\_\_

13. How many beats does the second note in the first measure above get? \_\_\_\_\_
14. What type of note is played when playing "-ness"? \_\_\_\_\_
15. What two notes are played when playing "auld"? \_\_\_\_\_
16. What two notes are played when playing "lang"? \_\_\_\_\_

1. syne. And 2. syne.

17. What note is played when playing "syne"? \_\_\_\_\_
18. What is indicated by the double bar lines and dots? \_\_\_\_\_
19. What is indicated by the marking above the staff showing a "1" and a "2"? \_\_\_\_\_
20. How many beats does the note for the second "syne" get? \_\_\_\_\_

