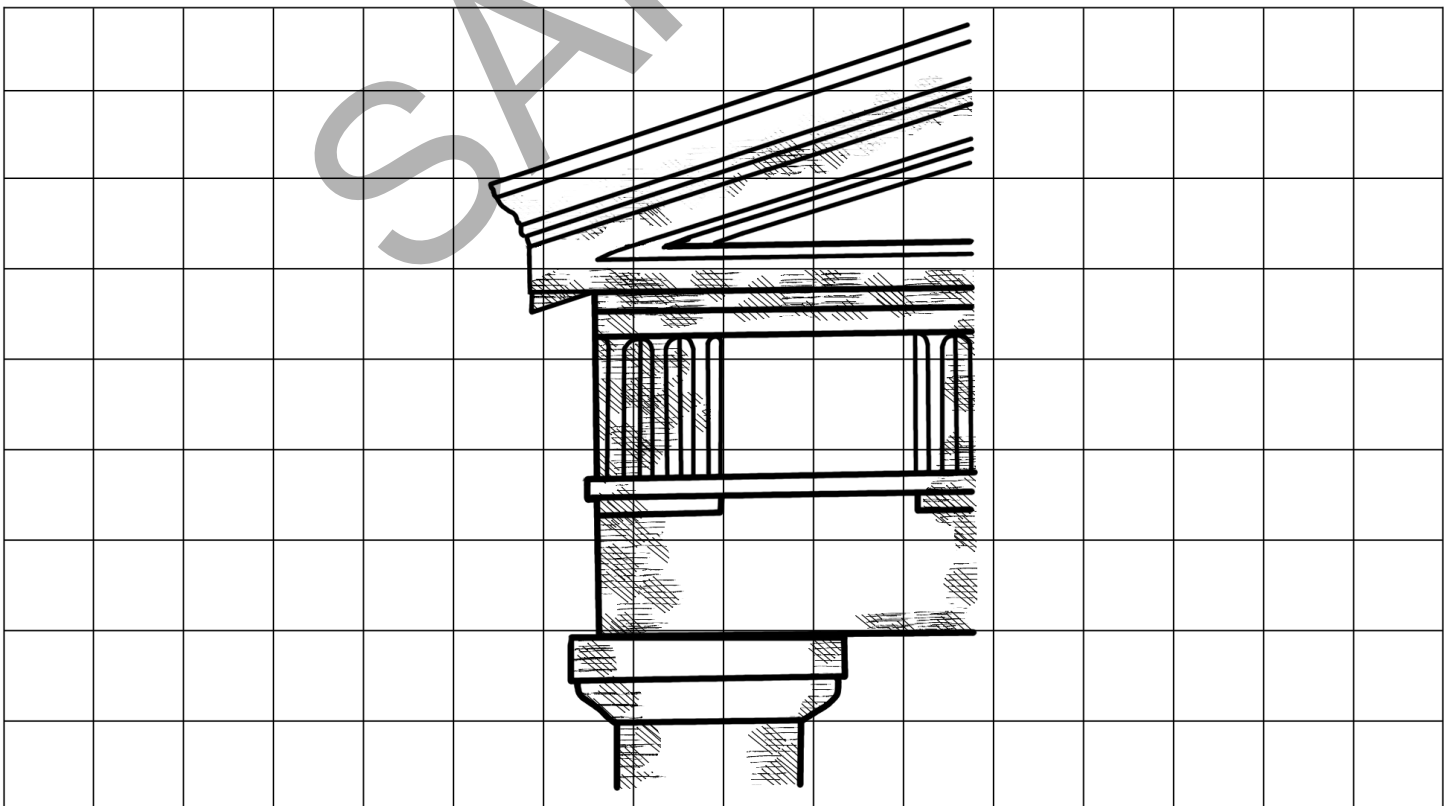


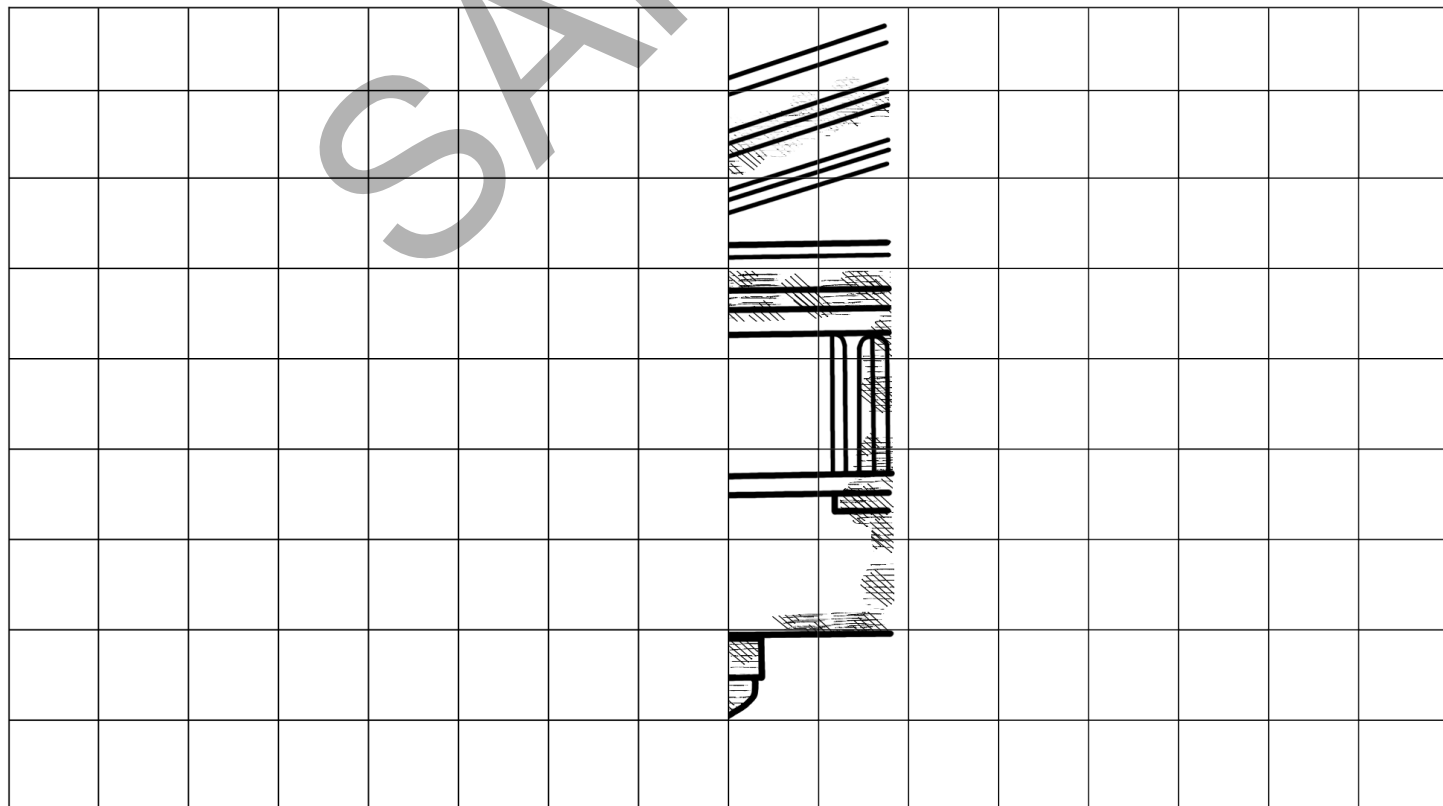
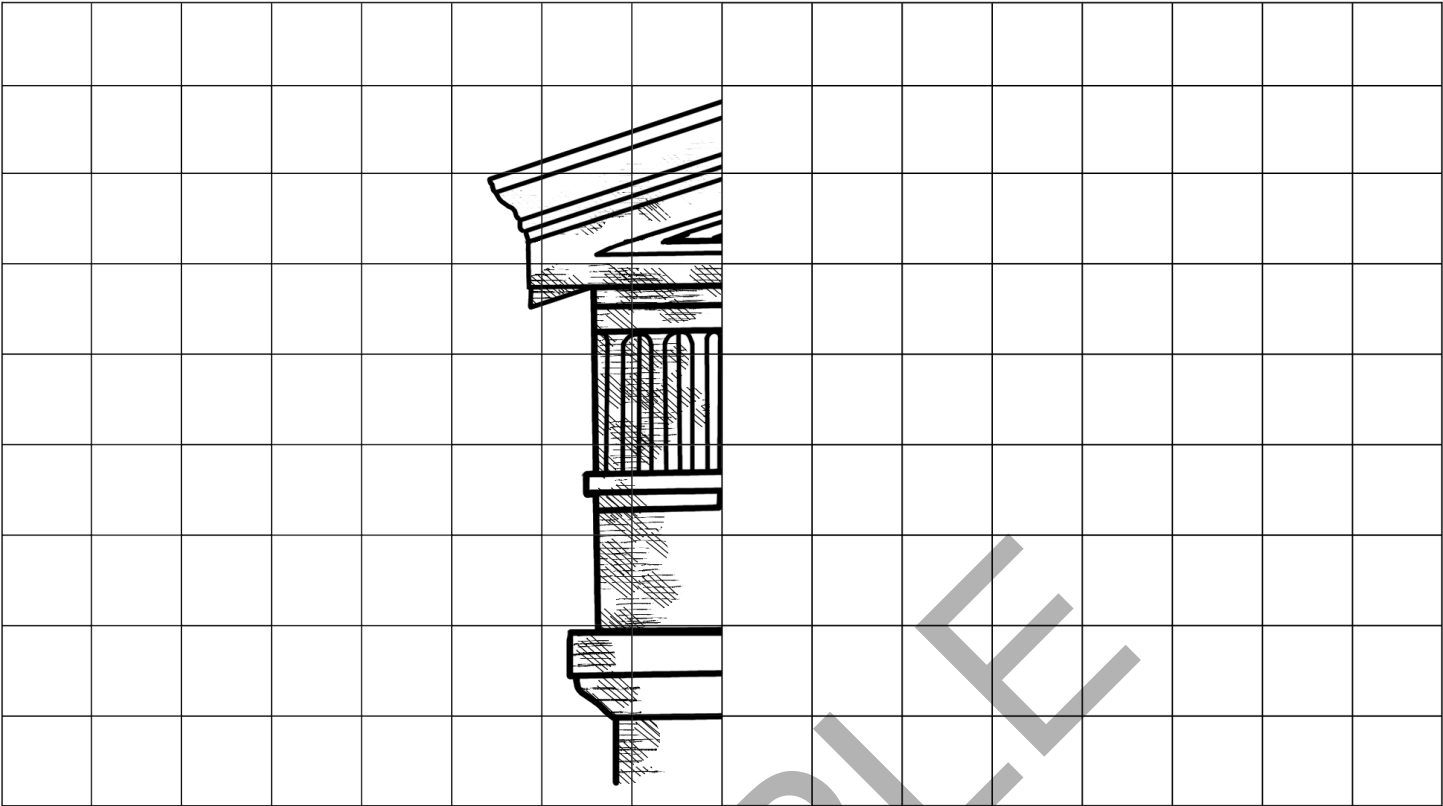
# Entablature

An entablature is a horizontal set of moldings and bands, sometimes decorative, that sit on top of columns. There are three parts to the entablature: the architrave, the frieze, and the cornice. The architrave is the main beam that sits across the top of the columns. The frieze sits directly on top of the architrave and is often decoratively sculptured. On top of the frieze sits the cornice. The cornice often sticks out over the architrave and frieze, providing a type of “crown” at the top of the entablature. The entablature can be seen in Minoan architecture and was later a very important part of Greek architecture.

Follow these instructions to draw an entablature on the next page like the picture shown below:

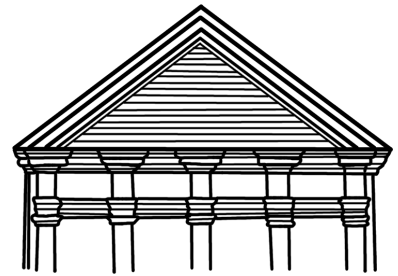
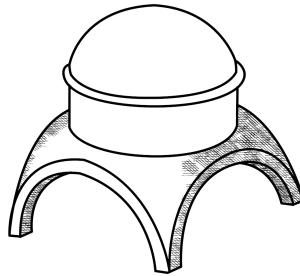
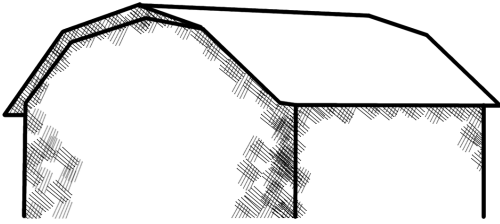
- Decide if you want to draw the right half of the picture or the left half of the picture and draw it in one of the first two grids. You can draw both if you'd like.
- Now, using a blank grid from the back of the book, try drawing the whole picture.



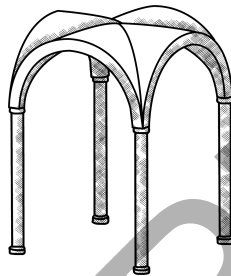
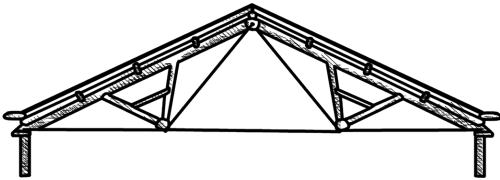


# Questions

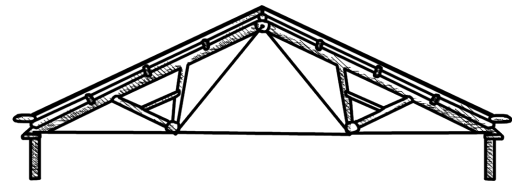
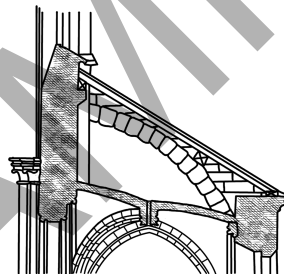
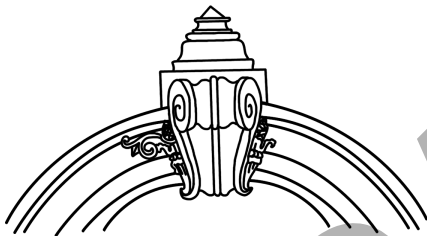
1. Which picture shows a pediment? Circle it.



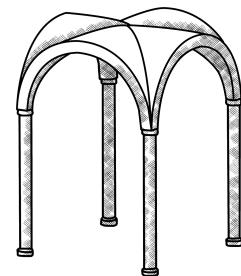
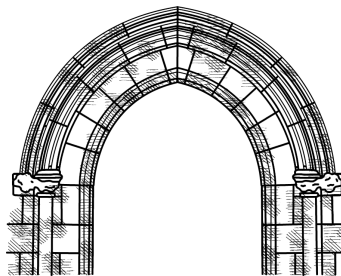
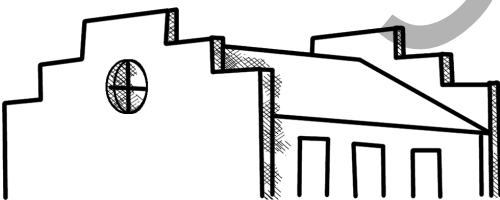
2. Which picture shows a groined vault? Circle it.



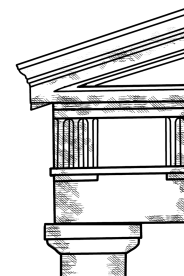
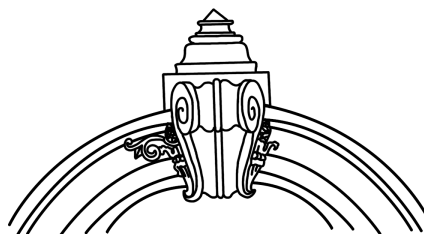
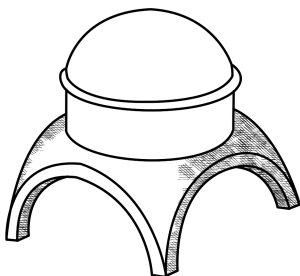
3. Which picture shows a truss roof? Circle it.

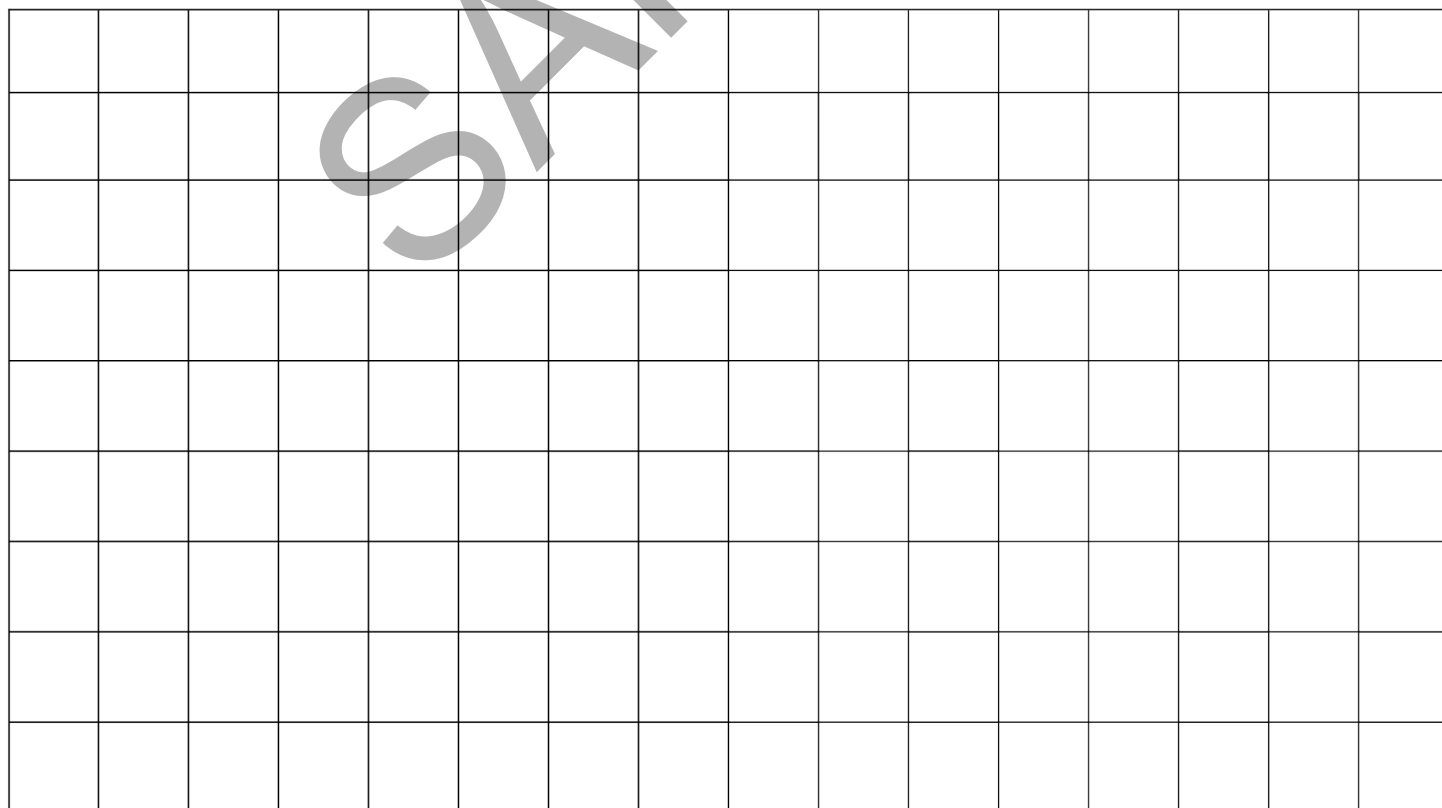
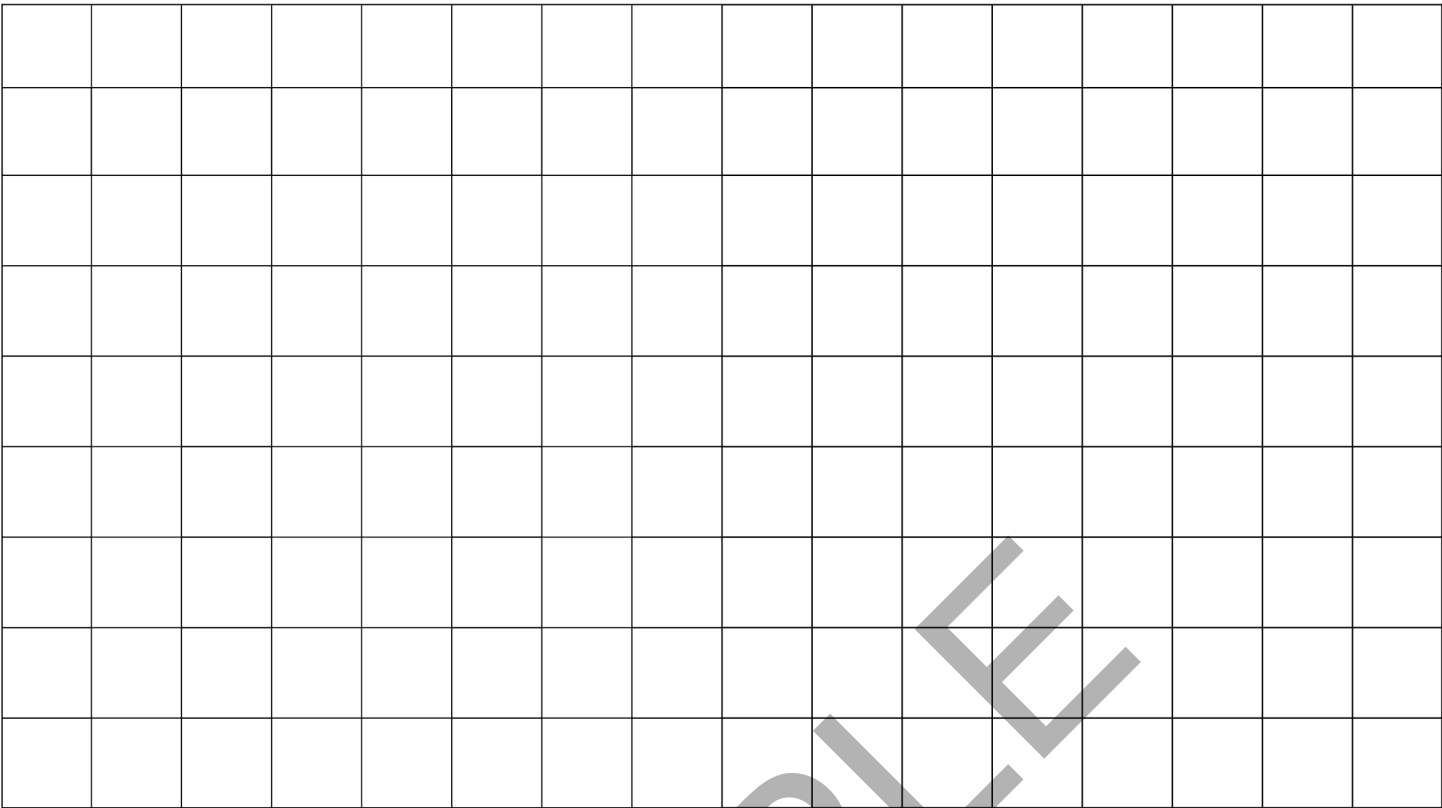


4. Which picture shows a stepped/crowstepped gable? Circle it.



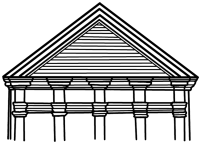
5. Which picture shows an entablature? Circle it.



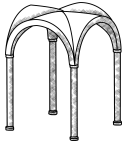


# Answer Key

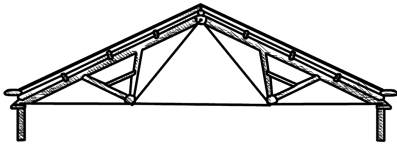
1.



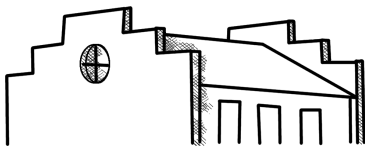
2.



3.



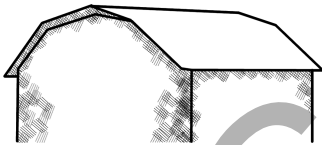
4.



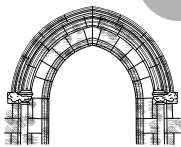
5.



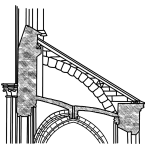
6.



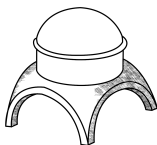
7.



8.



9.



10.

