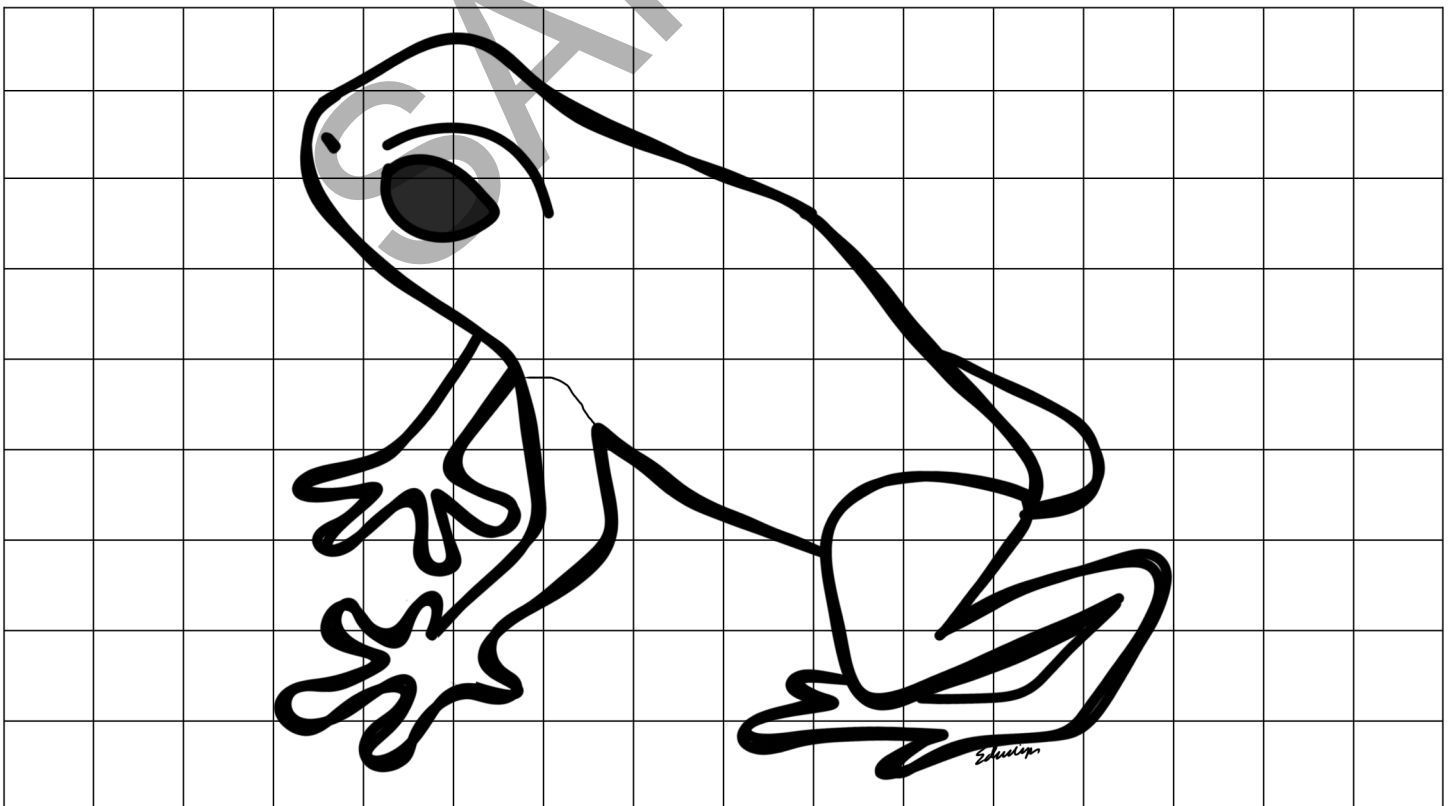


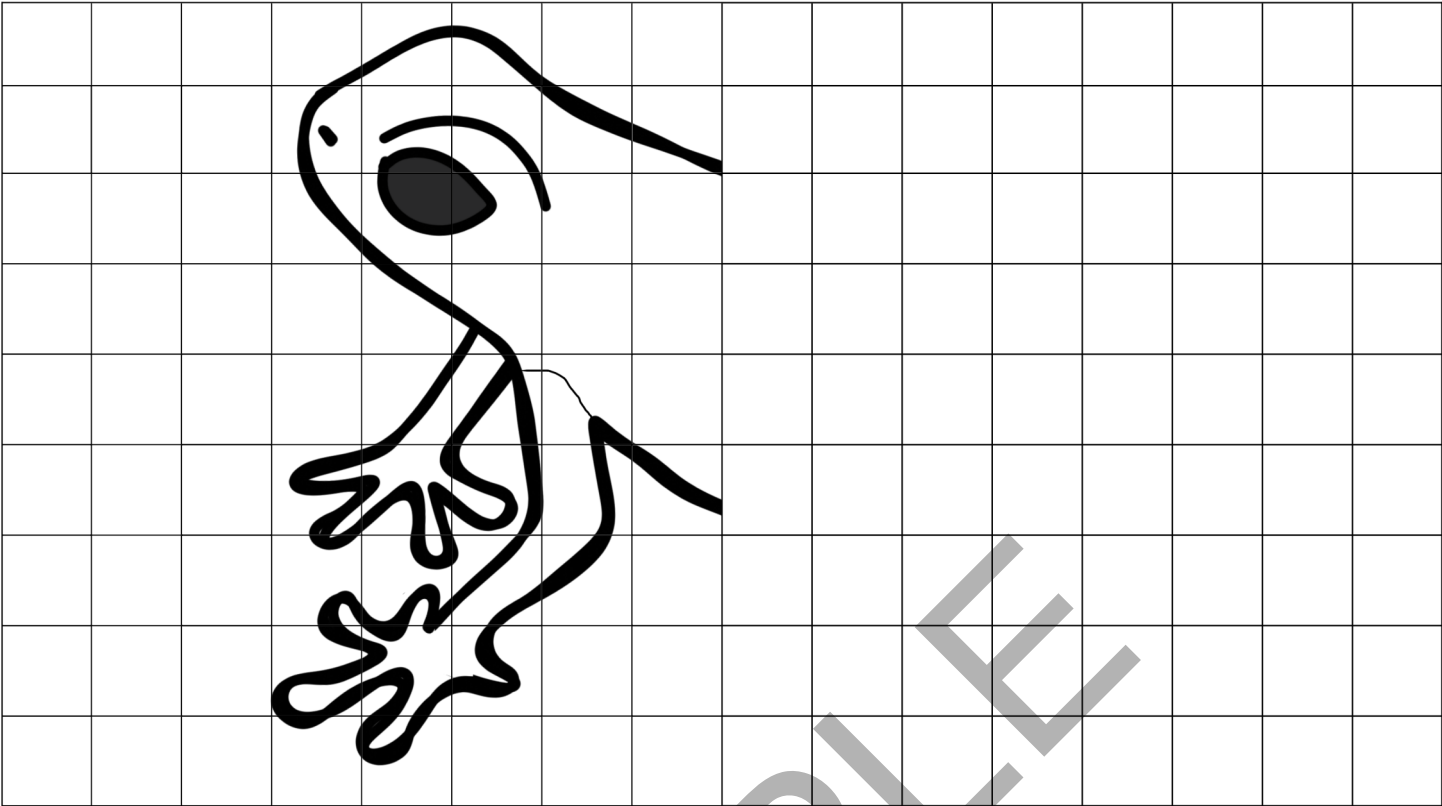
## Strawberry Poison Dart Frog

The strawberry poison dart frog eats mostly ants, so it may not sound very dangerous, but its skin produces a secretion that can actually kill if it gets absorbed by the human body. It makes its home in the rainforests of Central America. After the female frog lays her eggs, the male frog protects and cares for them until they hatch. Once they hatch, the female comes back and carries the tadpoles to their new home.

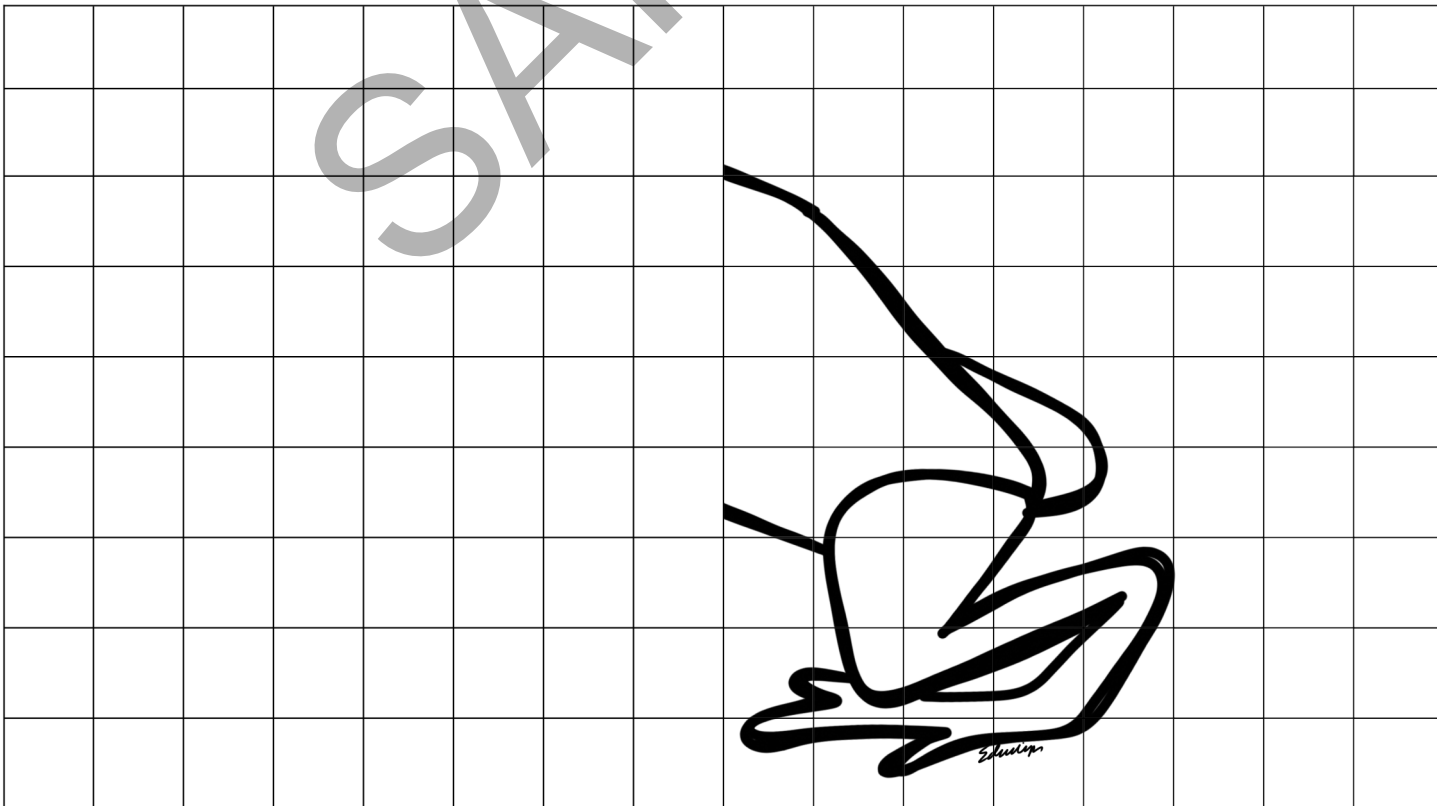
Follow these instructions to draw a strawberry poison dart frog on the next page like the one shown below:

- Decide if you want to draw the right half of the picture or the left half of the picture and draw it in one of the first two grids. You can draw both if you'd like.
- Now, using a blank grid from the back of the book, try drawing the whole picture.



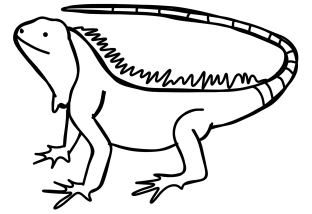
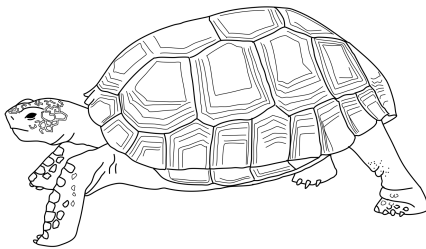
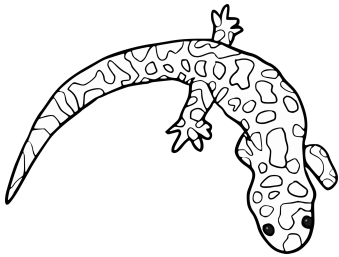


SAMPLE

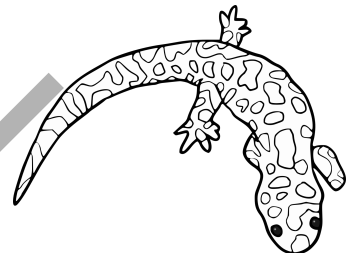


# Questions

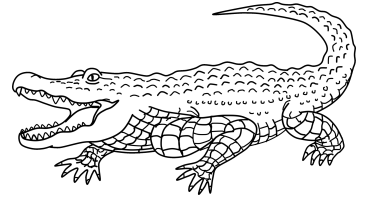
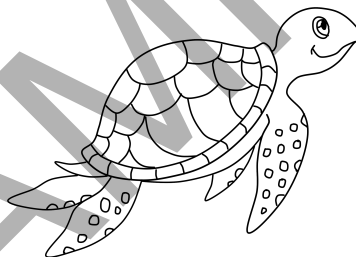
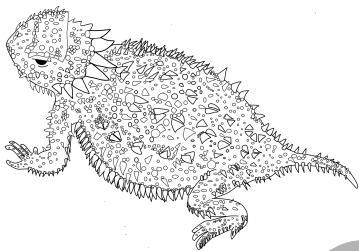
1. Which picture shows a desert tortoise? Circle it.



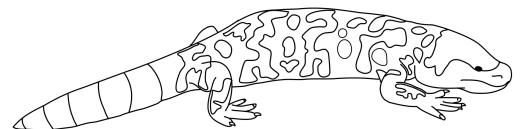
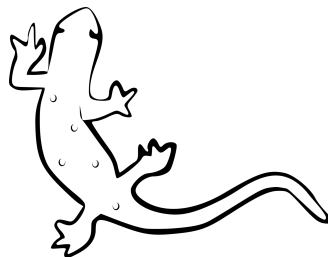
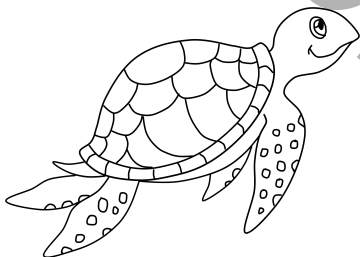
2. Which picture shows a tiger salamander? Circle it.



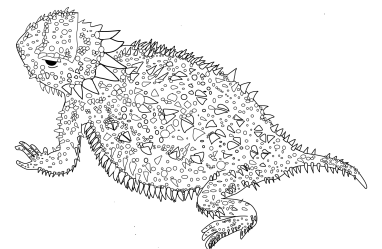
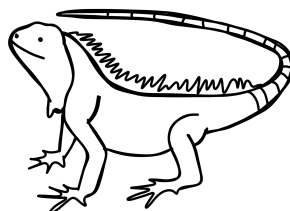
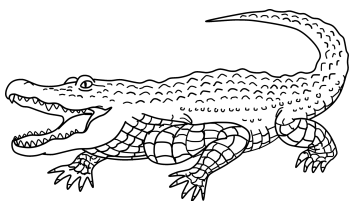
3. Which picture shows an alligator? Circle it.

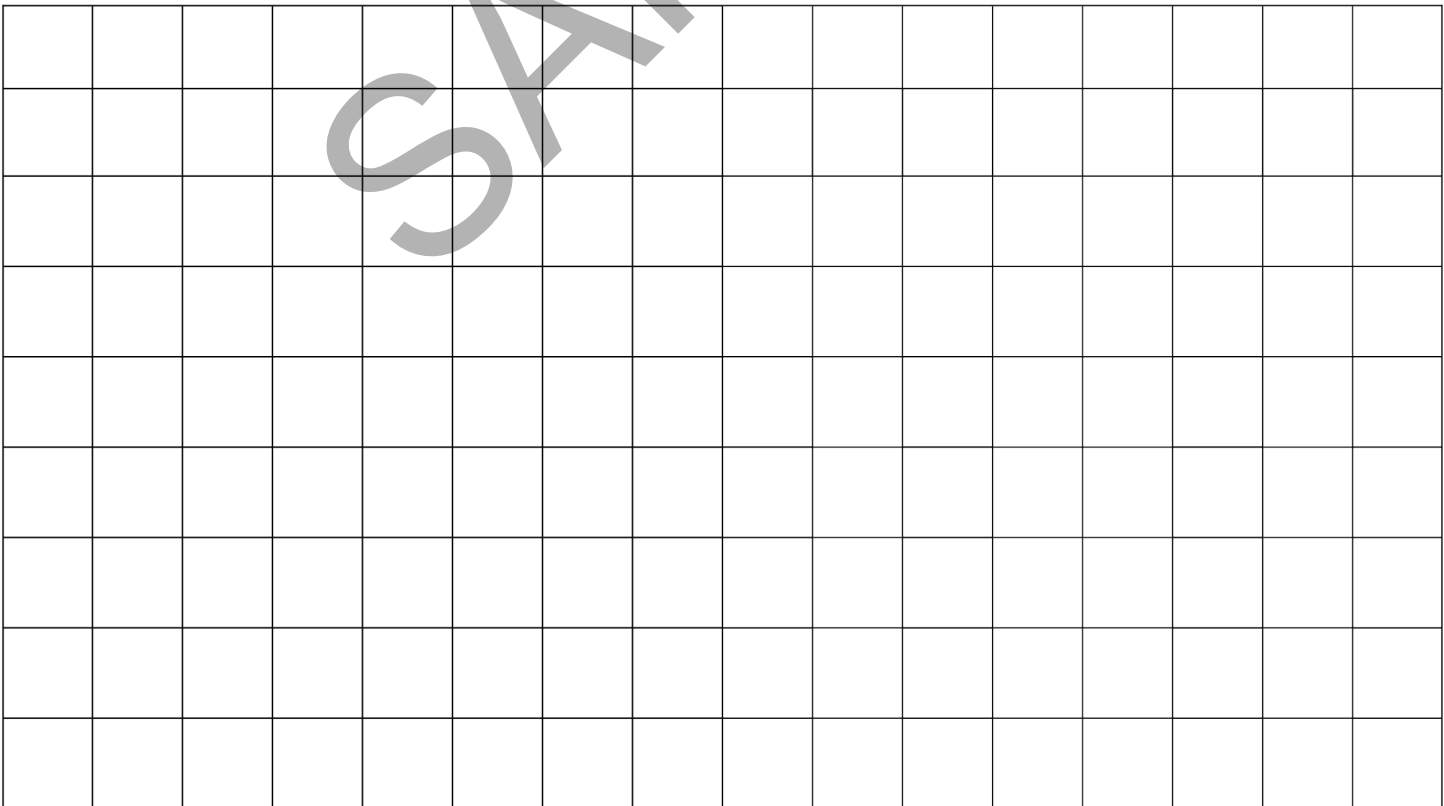
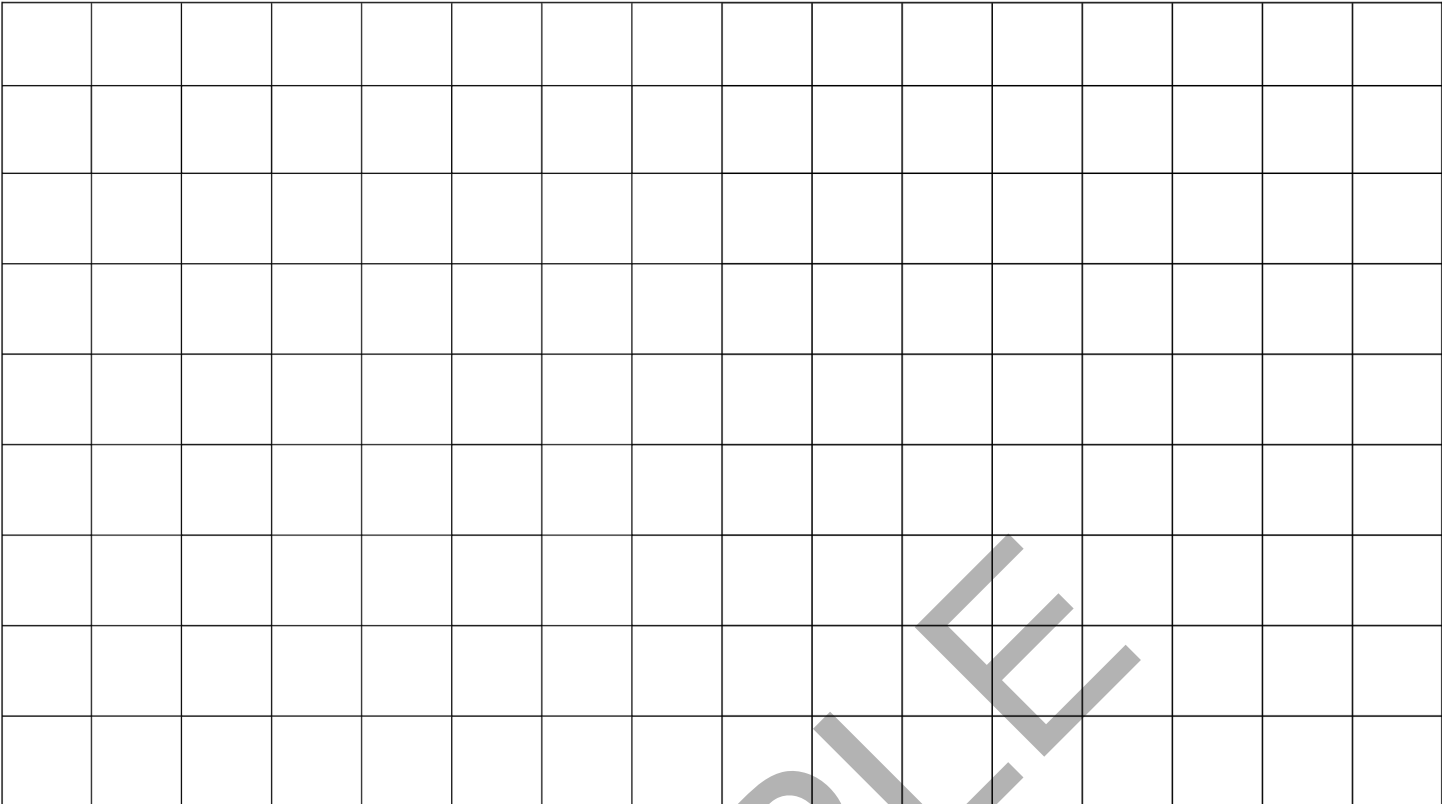


4. Which picture shows a sea turtle? Circle it.



5. Which picture shows an iguana? Circle it.

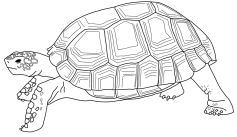




SAMPLE

# Answer Key

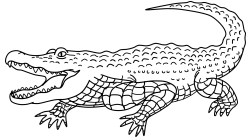
1.



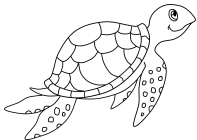
2.



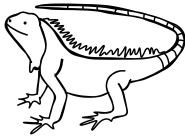
3.



4.



5.



6.



7.



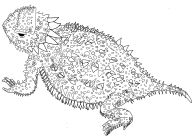
8.



9.



10.



SAMPLE