

Ant

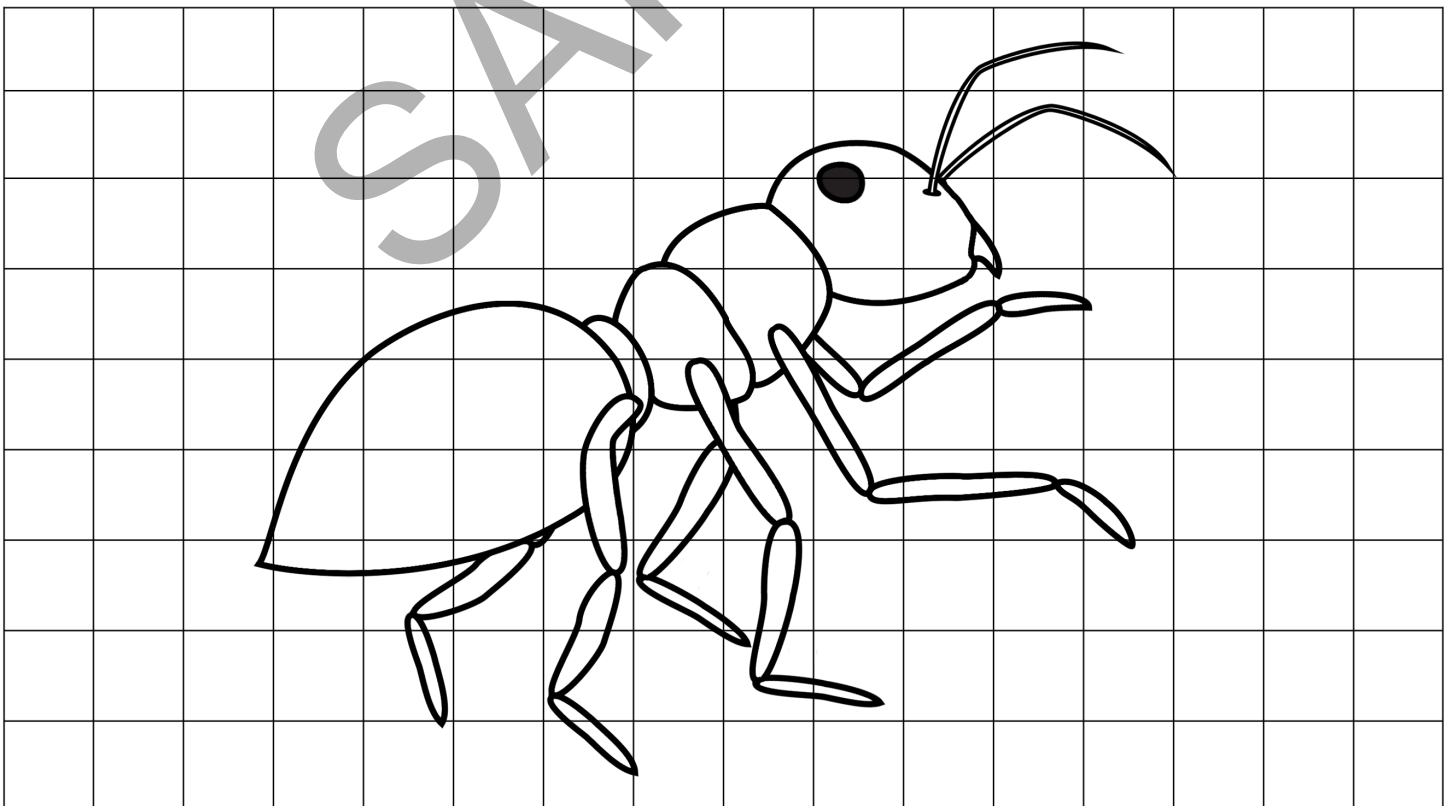
Ants are part of a group of invertebrates we are all very familiar with—insects. Ants are generally small, but they can be incredibly strong. An ant can lift things that weigh thirty times as much as it does. If a person could do that, a 200-pound (91-kilogram) man would have to lift 3 tons (2.7 metric tons)! Ants live in colonies that can include dozens, hundreds, or even thousands of ants. In some rare cases, even millions of ants can live in one huge colony.

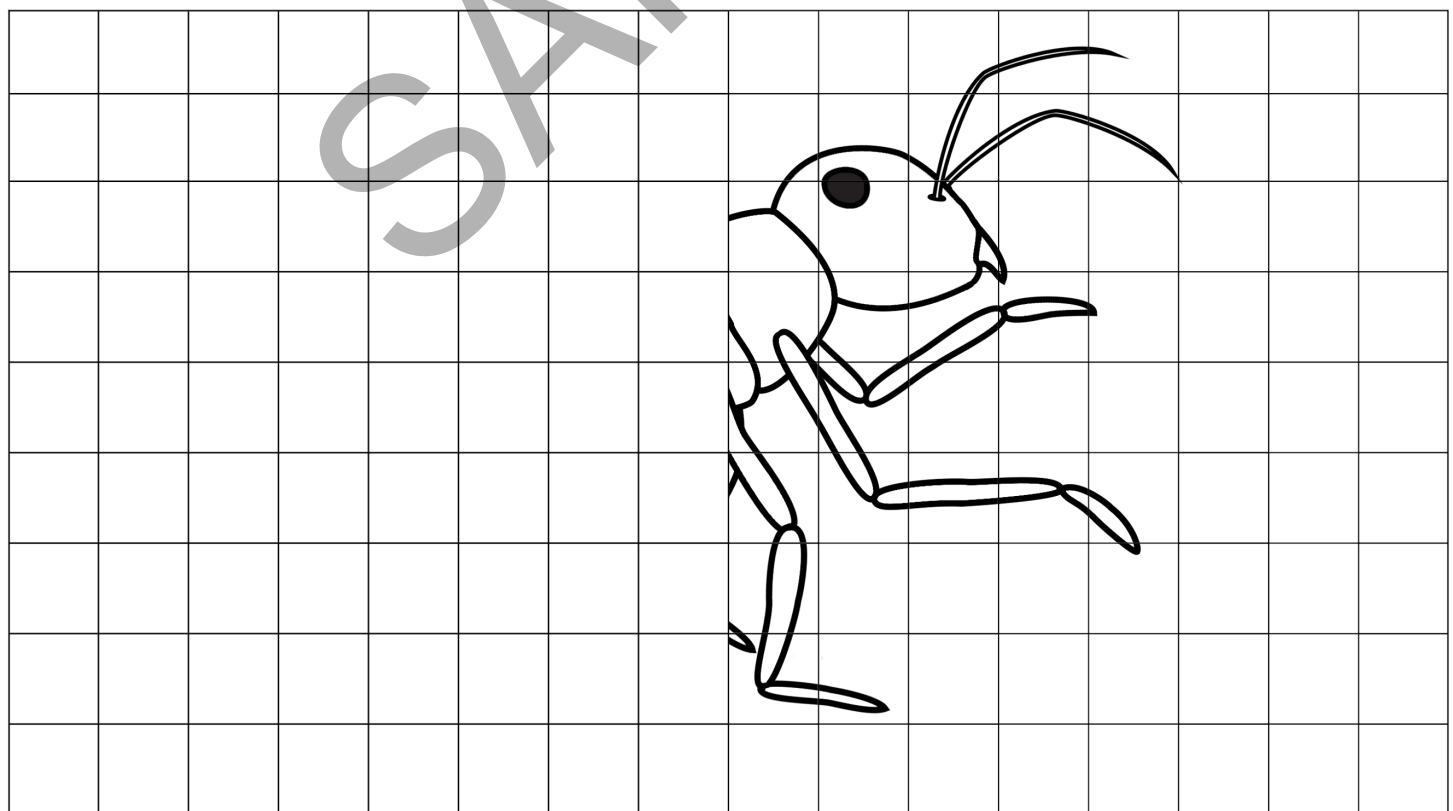
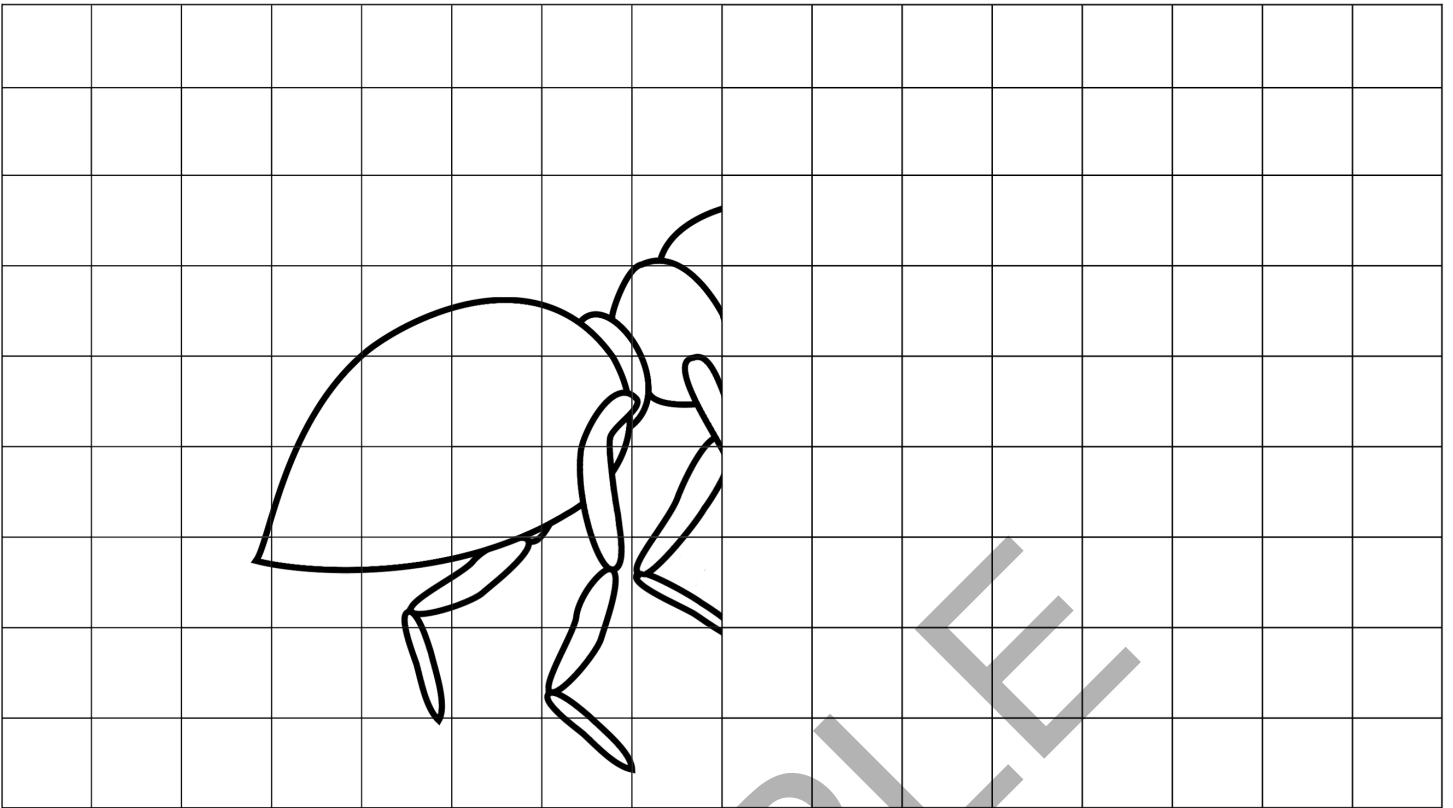
Ants have a head, thorax, and abdomen. They have bent antennae, and some ants have poisonous stingers used for defense. Instead of lungs, ants breathe through tubes that reach from openings in the sides of their bodies. These openings are called spiracles, and the tubes reach to all their other parts. They use their antennae to smell, touch, and taste. Most ants have two compound eyes. Some species also have three simple eyes.

Ants begin as eggs laid by a queen. After a few days, they hatch and become larvae. The larvae looks like a worm and does not have any legs. They have a head and a mouth, though, so worker ants carry them around. As they grow, they become pupae. Some ants are wrapped in a cocoon before growing into pupae, but others are covered with just a tough, transparent layer of skin. The pupae does not eat while it is growing but emerges as an adult a few days or a few weeks later.

Follow these instructions to draw an ant on the next page like the one shown below:

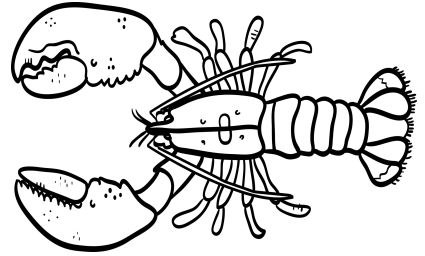
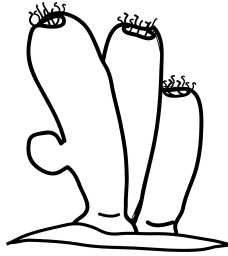
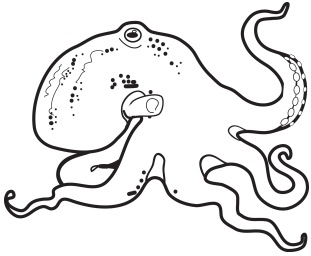
- Decide if you want to draw the right half of the picture or the left half of the picture and draw it in one of the first two grids. You can draw both if you'd like.
- Now, using a blank grid from the back of the book, try drawing the whole picture.



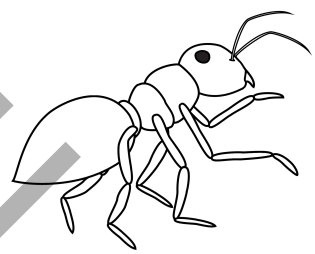
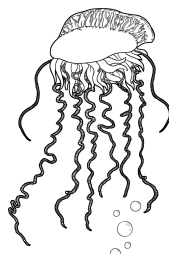
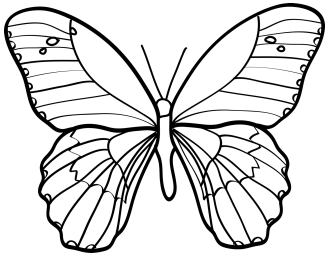


Identify the Image

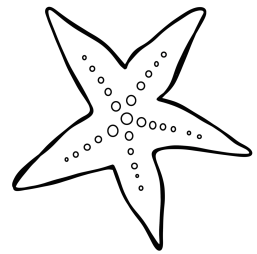
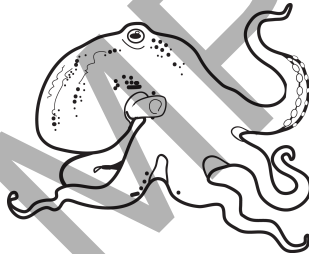
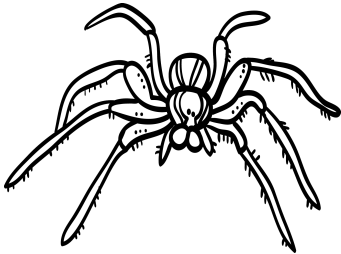
1. Which picture shows an octopus? Circle it.



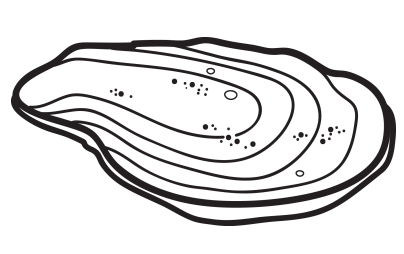
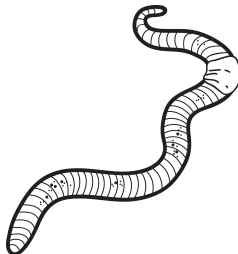
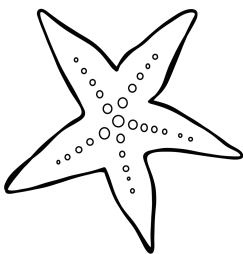
2. Which picture shows a butterfly? Circle it.



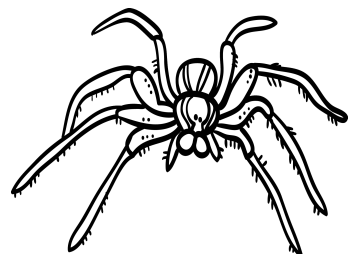
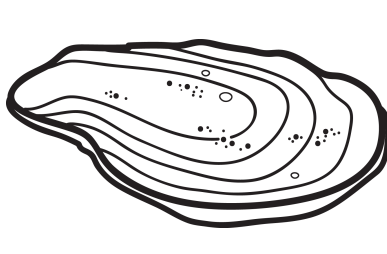
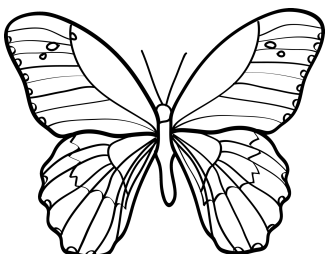
3. Which picture shows a starfish? Circle it.

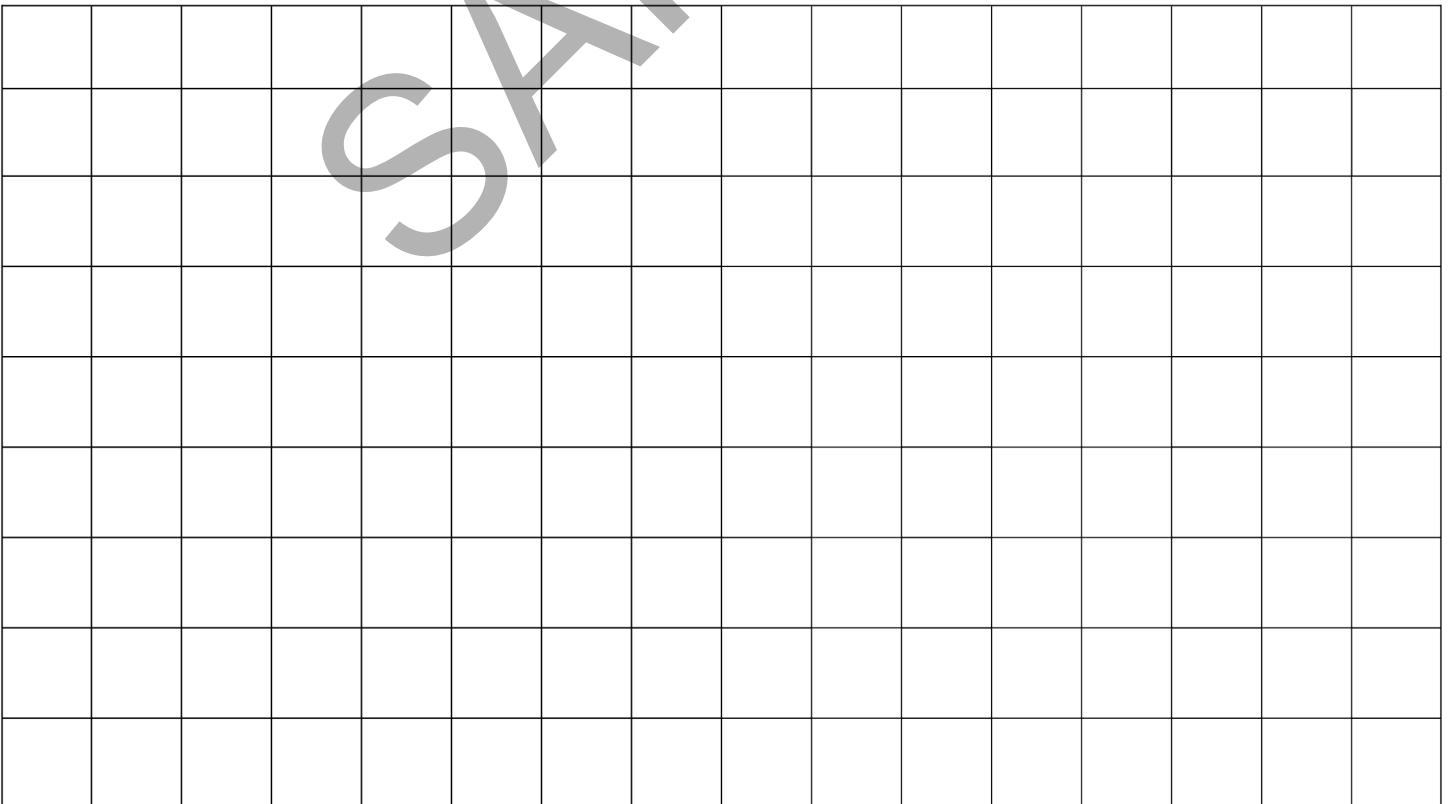
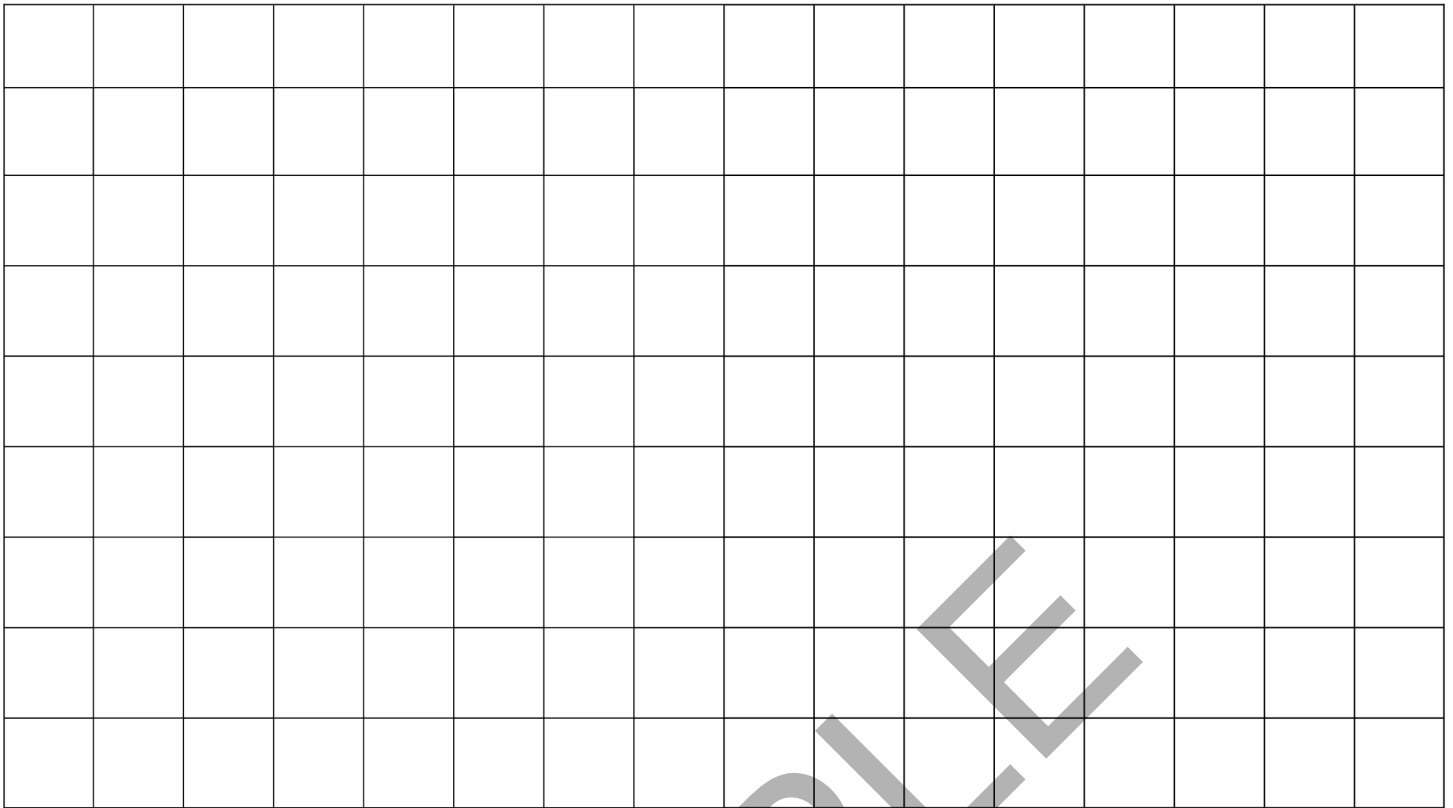


4. Which picture shows an earthworm? Circle it.



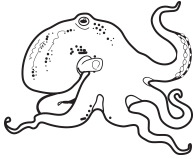
5. Which picture shows a spider? Circle it.



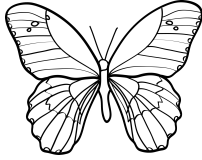


Answer Key

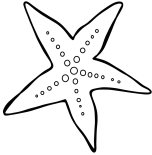
1.



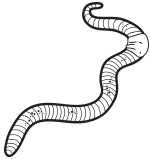
2.



3.



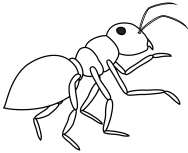
4.



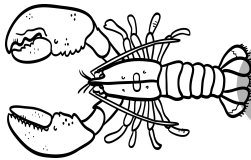
5.



6.



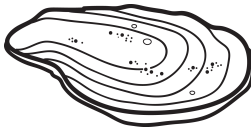
7.



8.



9.



10.

