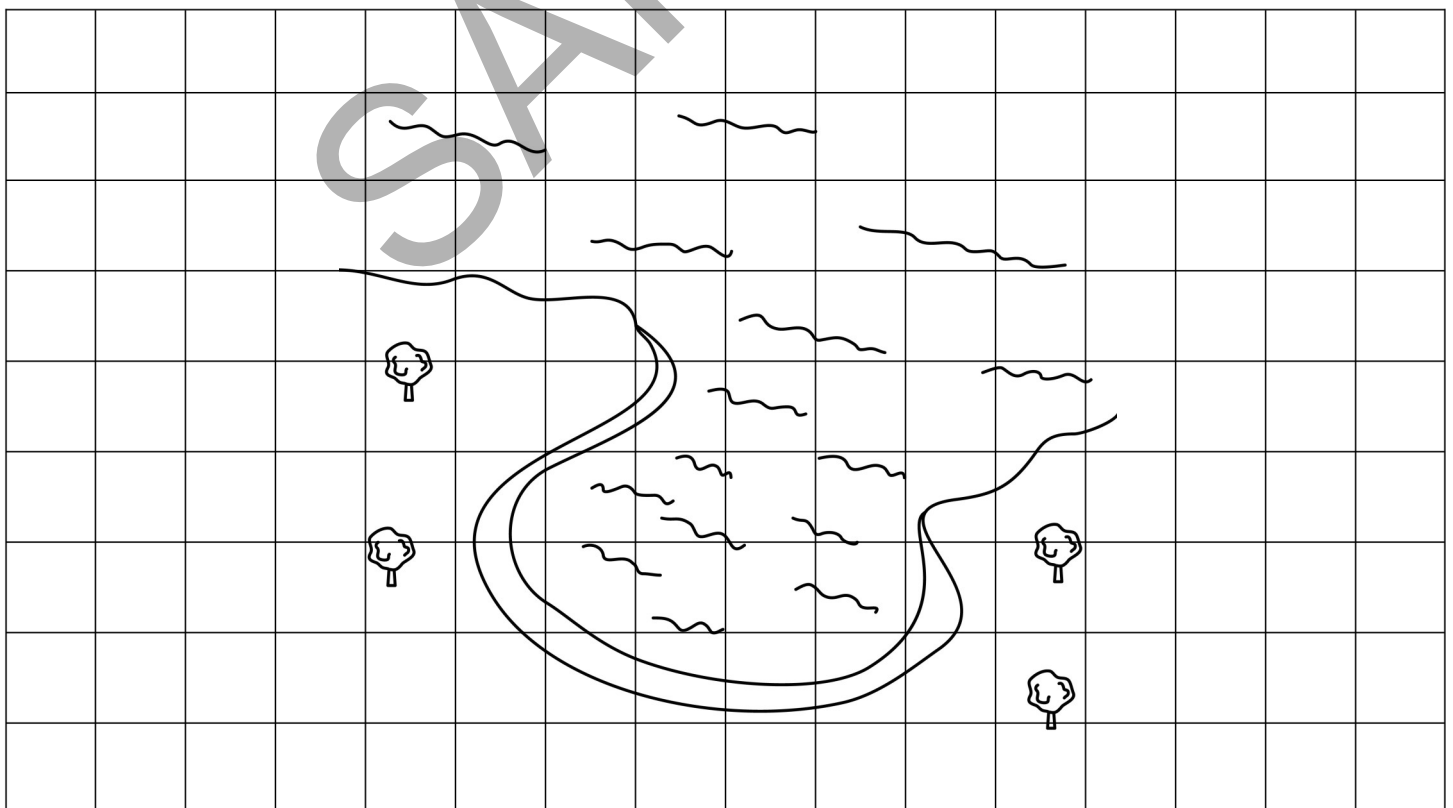


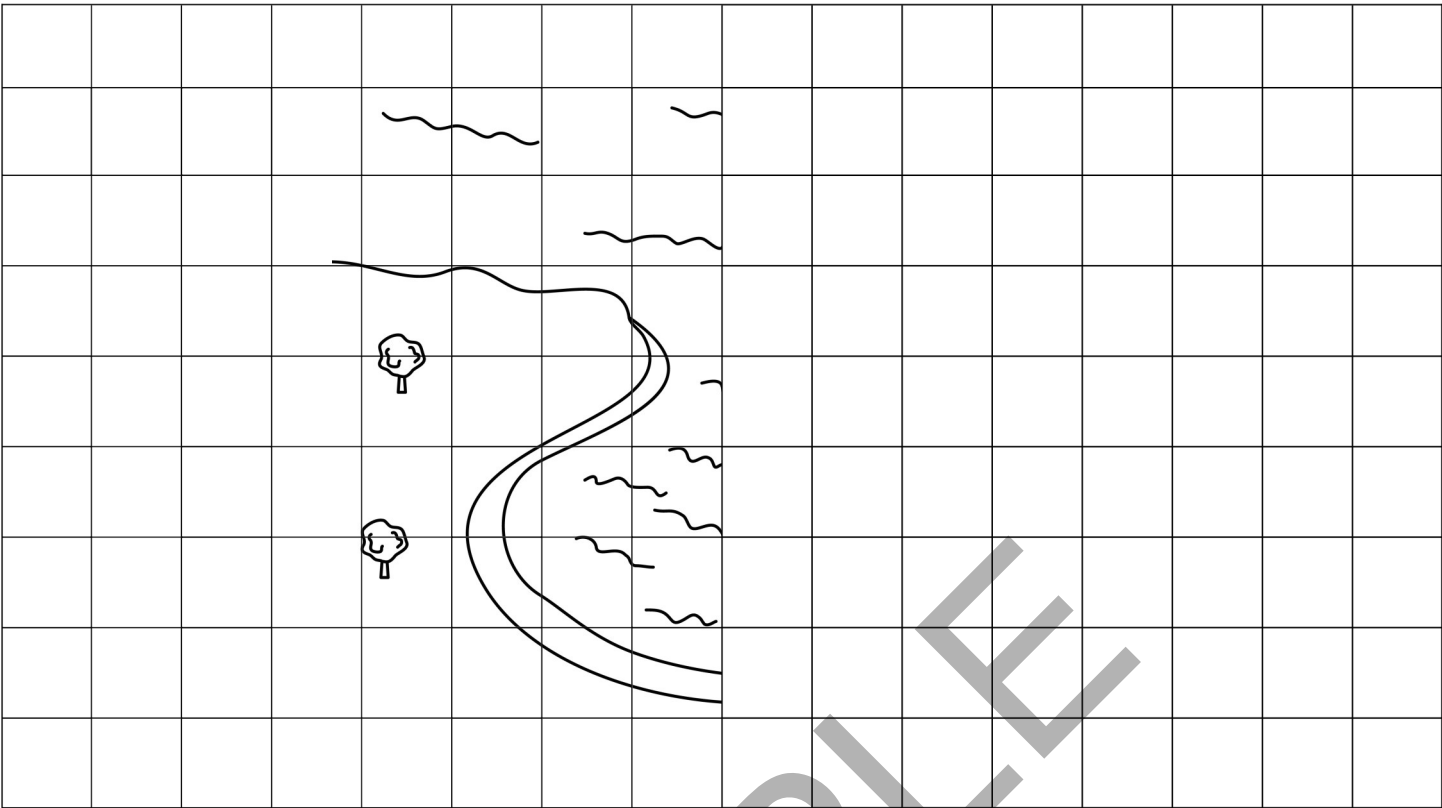
Bay

A bay is a body of water, smaller than a gulf, that is partially surrounded by land. There are bays in every part of the world, such as the Bay of Bengal in Asia, the Hudson Bay in North America, and the Bay of Biscay in Europe. A bay in Russia near Lake Baikal, called Provo Bay, was created in 1862 by an earthquake that hit the region.

Follow these instructions to draw a bay on the next page like the one shown below:

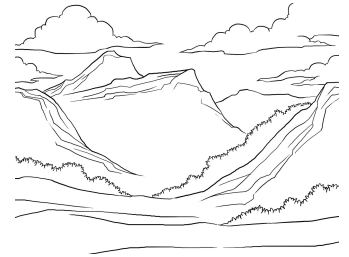
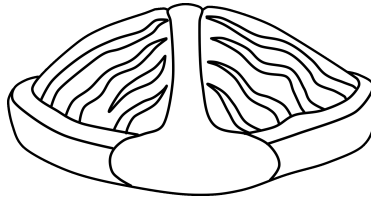
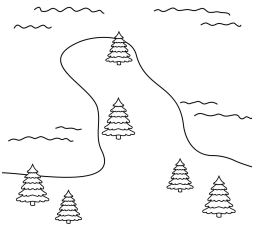
- Decide if you want to draw the right half of the picture or the left half of the picture and draw it in one of the first two grids. You can draw both if you'd like.
- Now, using a blank grid from the back of the book, try drawing the whole picture.



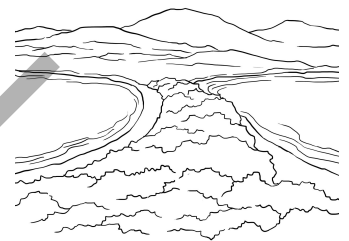
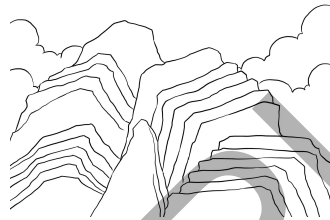


Questions

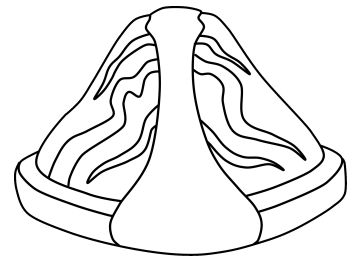
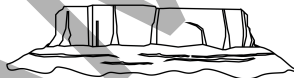
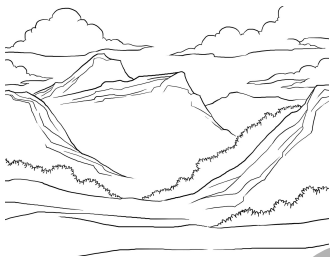
1. Which picture shows a shield volcano? Circle it.



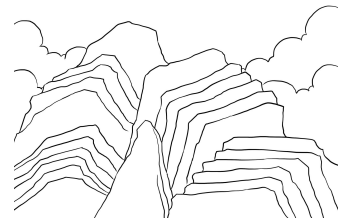
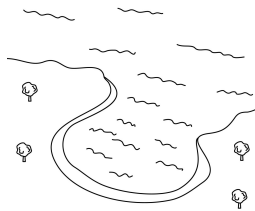
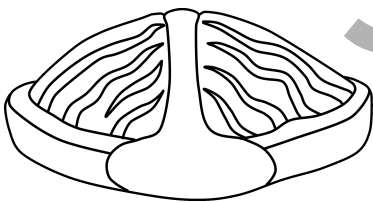
2. Which picture shows an isthmus? Circle it.



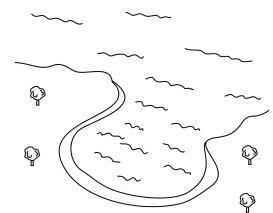
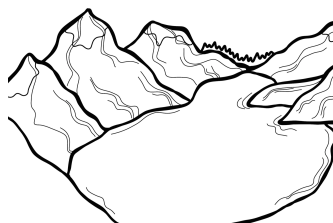
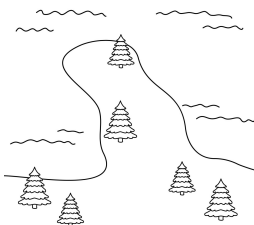
3. Which picture shows a valley? Circle it.

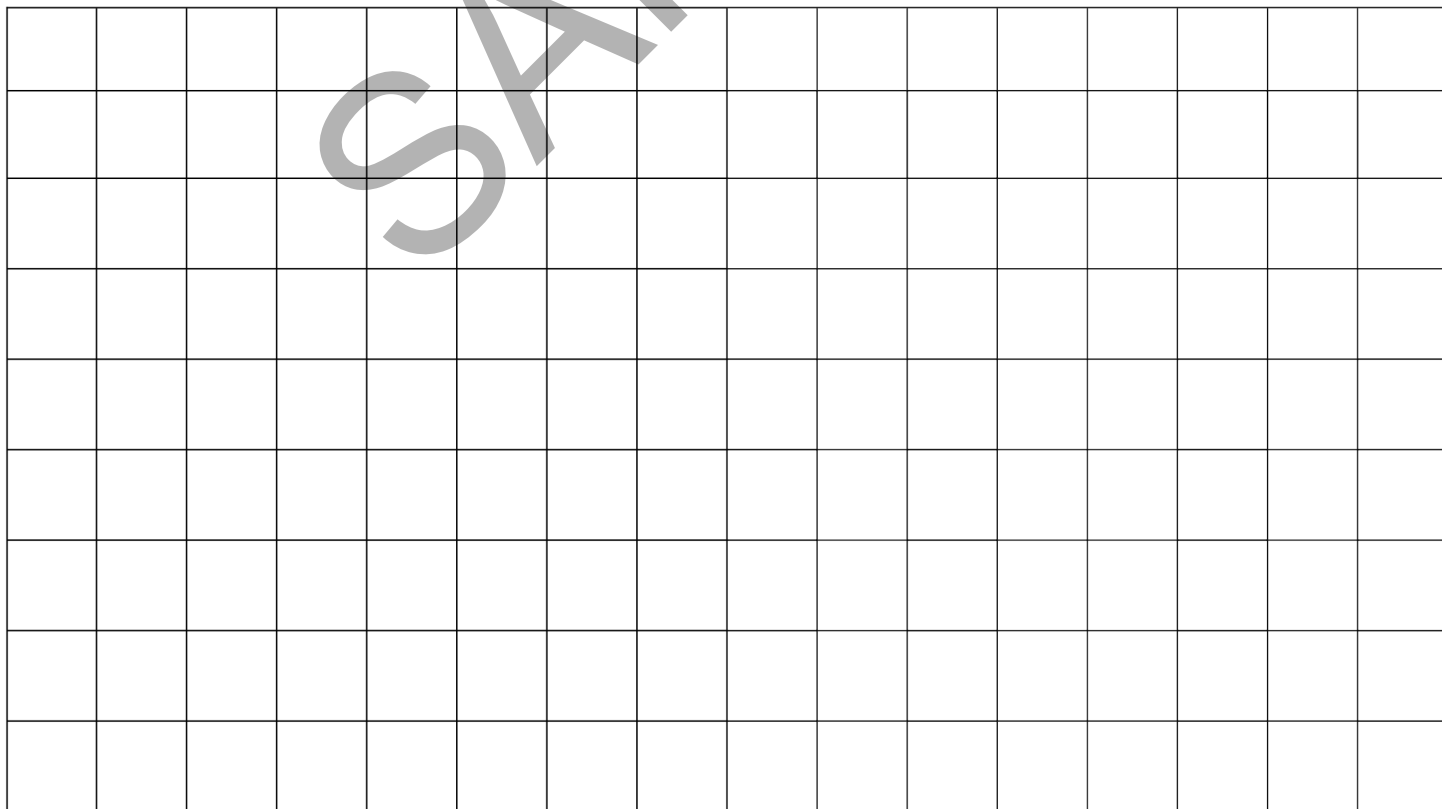
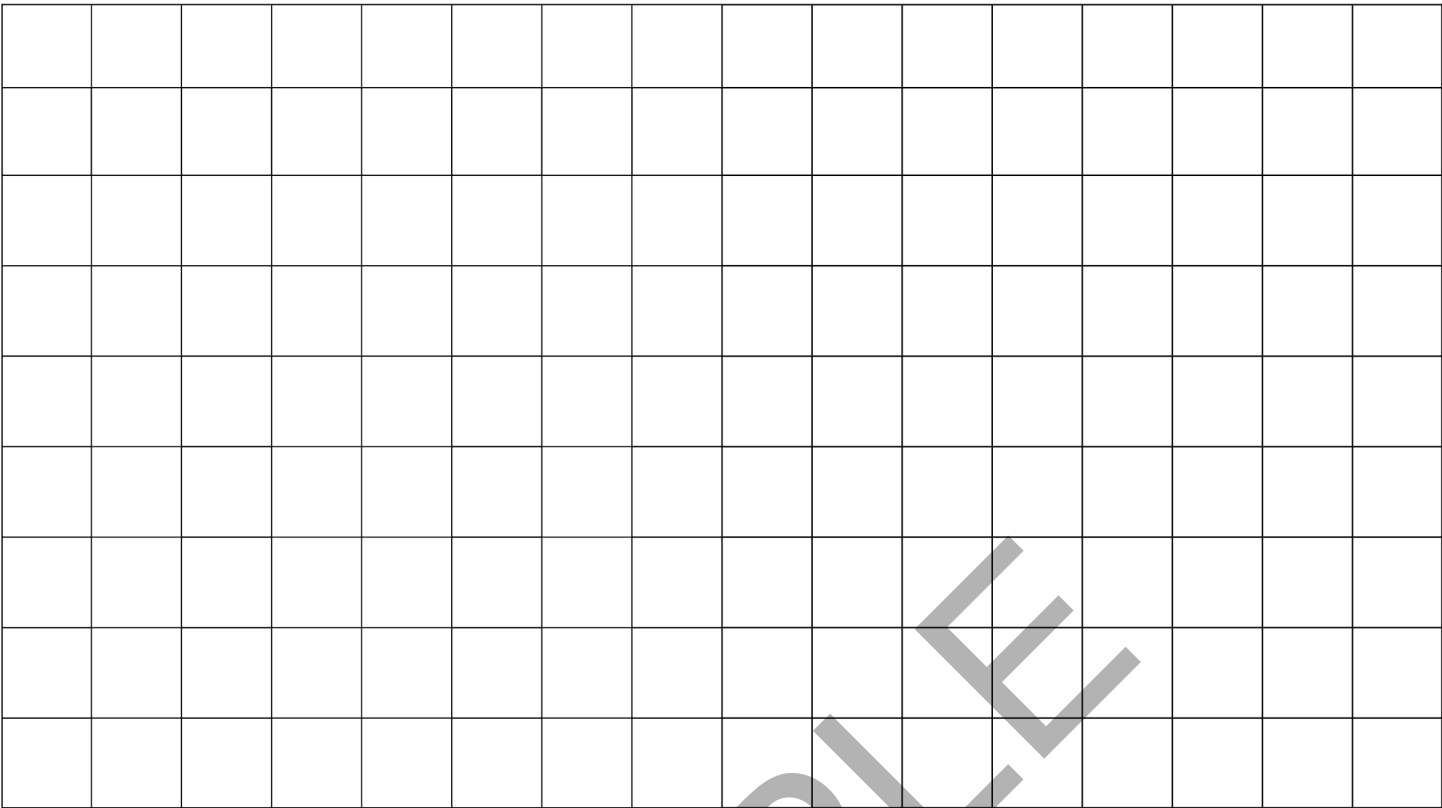


4. Which picture shows a bay? Circle it.



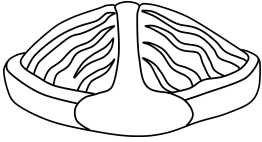
5. Which picture shows a peninsula? Circle it.



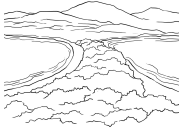


Answer Key

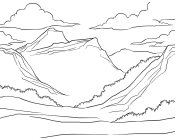
1.



2.



3.



4.



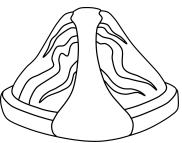
5.



6.



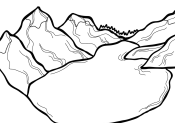
7.



8.



9.



10.

